

Berger Realty

Since 1926



Berger Realty, Inc.
3160 Asbury Avenue
Ocean City, NJ 08226
1-877-237-4371 / 609-399-0076
info@bergerrealty.com



11 CRESTMONT DRIVE, Somers Point, NJ, 08244

Price \$399,900.00

PROPERTY DETAILS

Total Rooms	
Bedrooms	0
Baths Full	0
Baths Half	0
Year Built	
Type	
Block Number	521
Listing #	582674
Taxes	6682.00

COMMENTS

SPACIOUS DUPLEX WITH 2 BEDROOMS AND 1 BATH ON EACH LEVEL AND SEPARATE METERS IN A GREAT SOMERS POINT LOCATION MINUTES FROM OCEAN CITY. TENANT OCCUPIED WITH MONTH TO MONTH LEASES. BUYER AGREES TO PURCHASE PROPERTY TENANT OCCUPIED....

PROPERTY FEATURES

OutsideFeatures	ParkingGarage	OtherRooms	Basement
Deck	None	Dining Room	Crawl Space
Patio		Kitchen	
Porch		Living Room	
Sidewalks			
Heating	HotWater	Water	Sewer
Forced Air	Electric	Public	Public Sewer
Gas-Natural			

CONTACT



Ask for Lauren Greiner
Berger Realty Inc
3160 Asbury Avenue, Ocean City
Call: 609-602-5960
Email to: lmg@bergerrealty.com

Scan to see Property page.



Berger Realty

Since 1926



Berger Realty, Inc.
3160 Asbury Avenue
Ocean City, NJ 08226
1-877-237-4371 / 609-399-0076
info@bergerrealty.com



11 CRESTMONT DRIVE, Somers Point, NJ, 08244

Price \$399,900.00

PROPERTY DETAILS

Total Rooms	
Bedrooms	0
Baths Full	0
Baths Half	0
Year Built	
Type	
Block Number	521
Listing #	582674
Taxes	6682.00

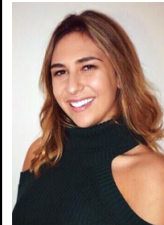
COMMENTS

SPACIOUS DUPLEX WITH 2 BEDROOMS AND 1 BATH ON EACH LEVEL AND SEPARATE METERS IN A GREAT SOMERS POINT LOCATION MINUTES FROM OCEAN CITY. TENANT OCCUPIED WITH MONTH TO MONTH LEASES. BUYER AGREES TO PURCHASE PROPERTY TENANT OCCUPIED....

PROPERTY FEATURES

OutsideFeatures	ParkingGarage	OtherRooms	Basement
Deck	None	Dining Room	Crawl Space
Patio		Kitchen	
Porch		Living Room	
Sidewalks			
Heating	HotWater	Water	Sewer
Forced Air	Electric	Public	Public Sewer
Gas-Natural			

CONTACT



Ask for Lauren Greiner
Berger Realty Inc
3160 Asbury Avenue, Ocean City
Call: 609-602-5960
Email to: lmg@bergerrealty.com

Scan to see Property page.

