

# Berger Realty

Since 1926



Berger Realty, Inc.  
3160 Asbury Avenue  
Ocean City, NJ 08226  
1-877-237-4371 / 609-399-0076  
info@bergerrealty.com



GRAVESMITH DRIVE, Egg Harbor Township, NJ, 08234

Price \$19,900.00

### PROPERTY DETAILS

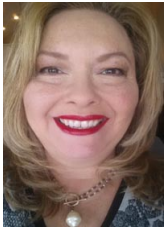
Total Rooms	
Bedrooms	0
Baths Full	0
Baths Half	0
Year Built	
Type	
Block Number	1026
Listing #	582642
Taxes	117.00

### COMMENTS

GREAT PRICE FOR THIS 100 X 100 LOT IN EGG HARBOR TOWNSHIP....

### PROPERTY FEATURES

### CONTACT



Ask for Theresa Maina  
Berger Realty Inc  
3160 Asbury Avenue, Ocean City  
Call: 609-703-7725  
Email to: tam@bergerrealty.com

Scan to see Property page.



# Berger Realty

Since 1926



Berger Realty, Inc.  
3160 Asbury Avenue  
Ocean City, NJ 08226  
1-877-237-4371 / 609-399-0076  
info@bergerrealty.com



GRAVESMITH DRIVE, Egg Harbor Township, NJ, 08234

Price \$19,900.00

### PROPERTY DETAILS

Total Rooms	
Bedrooms	0
Baths Full	0
Baths Half	0
Year Built	
Type	
Block Number	1026
Listing #	582642
Taxes	117.00

### COMMENTS

GREAT PRICE FOR THIS 100 X 100 LOT IN EGG HARBOR TOWNSHIP....

### PROPERTY FEATURES

### CONTACT



Ask for Theresa Maina  
Berger Realty Inc  
3160 Asbury Avenue, Ocean City  
Call: 609-703-7725  
Email to: tam@bergerrealty.com

Scan to see Property page.

