

Berger Realty

Since 1926

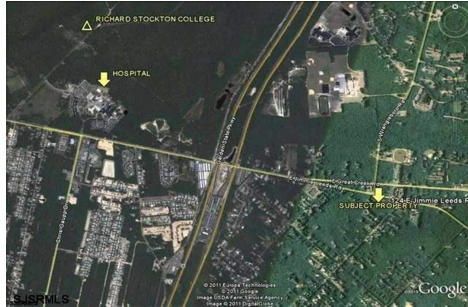


Berger Realty, Inc.
3160 Asbury Avenue
Ocean City, NJ 08226
1-877-237-4371 / 609-399-0076
info@bergerrealty.com



124 Jimmie Leeds Rd. & Second Avenue, Galloway
Township, NJ, 08205

Price \$425,000.00



PROPERTY DETAILS

Total Rooms	
Bedrooms	0
Baths Full	0
Baths Half	0
Year Built	
Type	
Block Number	979
Listing #	582632
Taxes	17188.00

COMMENTS

Ideal corner location on a major highway near Stockton University, Parkway, Downtown Galloway and AtlantiCare Regional Hospital. Versatile zoning suitable for office/professional use. Ample parking available....

PROPERTY FEATURES

CONTACT



Ask for Karen A. Becker
Berger Realty Inc
3160 Asbury Avenue, Ocean City
Call: 609-364-0999
Email to: kab@bergerrealty.com

Scan to see Property page.



Berger Realty

Since 1926

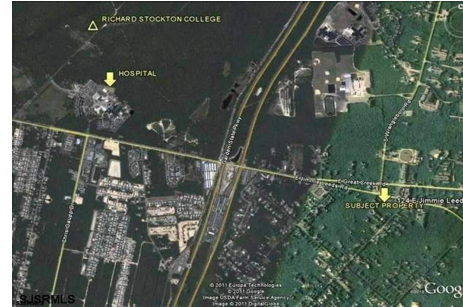


Berger Realty, Inc.
3160 Asbury Avenue
Ocean City, NJ 08226
1-877-237-4371 / 609-399-0076
info@bergerrealty.com



124 Jimmie Leeds Rd. & Second Avenue, Galloway
Township, NJ, 08205

Price \$425,000.00



PROPERTY DETAILS

Total Rooms	
Bedrooms	0
Baths Full	0
Baths Half	0
Year Built	
Type	
Block Number	979
Listing #	582632
Taxes	17188.00

COMMENTS

Ideal corner location on a major highway near Stockton University, Parkway, Downtown Galloway and AtlantiCare Regional Hospital. Versatile zoning suitable for office/professional use. Ample parking available....

PROPERTY FEATURES

CONTACT



Ask for Karen A. Becker
Berger Realty Inc
3160 Asbury Avenue, Ocean City
Call: 609-364-0999
Email to: kab@bergerrealty.com

Scan to see Property page.

