

# Berger Realty

Since 1926

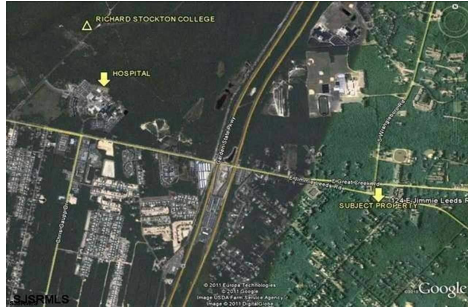


Berger Realty, Inc.  
3160 Asbury Avenue  
Ocean City, NJ 08226  
1-877-237-4371 / 609-399-0076  
info@bergerrealty.com



124 Jimmie Leeds Rd. & Second Avenue, Galloway  
Township, NJ, 08205

Price \$495,000.00



### PROPERTY DETAILS

Total Rooms	
Bedrooms	0
Baths Full	0
Baths Half	0
Year Built	
Type	
Block Number	979
Listing #	582632
Taxes	17188.00

### COMMENTS

*Ideal corner location on a major highway near Stockton University, Parkway, Downtown Galloway and AtlantiCare Regional Hospital. Versatile zoning suitable for office/professional use. Ample parking available....*

### PROPERTY FEATURES

### CONTACT



Ask for Tony Bono  
Berger Realty Inc  
3160 Asbury Avenue, Ocean City  
Call:  
Email to: ab@bergerrealty.com

Scan to see Property page.



# Berger Realty

Since 1926



Berger Realty, Inc.  
3160 Asbury Avenue  
Ocean City, NJ 08226  
1-877-237-4371 / 609-399-0076  
info@bergerrealty.com



124 Jimmie Leeds Rd. & Second Avenue, Galloway  
Township, NJ, 08205

Price \$495,000.00



### PROPERTY DETAILS

Total Rooms	
Bedrooms	0
Baths Full	0
Baths Half	0
Year Built	
Type	
Block Number	979
Listing #	582632
Taxes	17188.00

### COMMENTS

*Ideal corner location on a major highway near Stockton University, Parkway, Downtown Galloway and AtlantiCare Regional Hospital. Versatile zoning suitable for office/professional use. Ample parking available....*

### PROPERTY FEATURES

### CONTACT



Ask for Tony Bono  
Berger Realty Inc  
3160 Asbury Avenue, Ocean City  
Call:  
Email to: ab@bergerrealty.com

Scan to see Property page.

