

Berger Realty

Since 1926



Berger Realty, Inc.
3160 Asbury Avenue
Ocean City, NJ 08226
1-877-237-4371 / 609-399-0076
info@bergerrealty.com

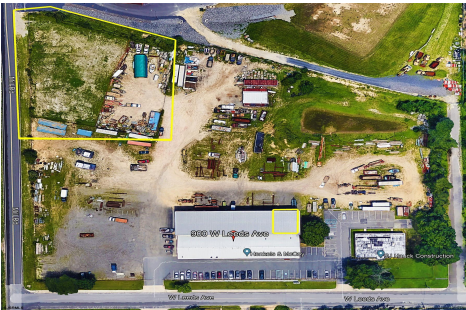


900 Leeds avenue, Pleasantville, NJ, 08232

Price \$0.00

PROPERTY DETAILS

Total Rooms	
Bedrooms	0
Baths Full	0
Baths Half	0
Year Built	
Type	
Block Number	200
Listing #	582508
Taxes	17906.00



COMMENTS

Prime Location for Atlantic County Services! This centrally located property offers a spacious 3,000 SF warehouse, along with two separate yard spaces, perfect for contractors or construction equipment storage. Conveniently situated near Atlantic City and major road networks, it provides easy access for businesses and clients alike. Lease rates: Yard #9 \$1500; Yard #10 \$...

PROPERTY FEATURES

Exterior	ParkingGarage	Water	Sewer
See Remarks	Off Street	Public	Public Sewer

CONTACT



Ask for Margarita Kobilianets
Berger Realty Inc
3160 Asbury Avenue, Ocean City
Call: 609-674-3417
Email to: mak@bergerrealty.com

Scan to see Property page.



Berger Realty

Since 1926



Berger Realty, Inc.
3160 Asbury Avenue
Ocean City, NJ 08226
1-877-237-4371 / 609-399-0076
info@bergerrealty.com

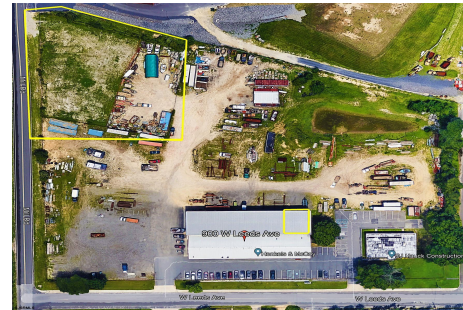


900 Leeds avenue, Pleasantville, NJ, 08232

Price \$0.00

PROPERTY DETAILS

Total Rooms	
Bedrooms	0
Baths Full	0
Baths Half	0
Year Built	
Type	
Block Number	200
Listing #	582508
Taxes	17906.00



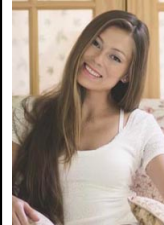
COMMENTS

Prime Location for Atlantic County Services! This centrally located property offers a spacious 3,000 SF warehouse, along with two separate yard spaces, perfect for contractors or construction equipment storage. Conveniently situated near Atlantic City and major road networks, it provides easy access for businesses and clients alike. Lease rates: Yard #9 \$1500; Yard #10 \$...

PROPERTY FEATURES

Exterior	ParkingGarage	Water	Sewer
See Remarks	Off Street	Public	Public Sewer

CONTACT



Ask for Margarita Kobilianets
Berger Realty Inc
3160 Asbury Avenue, Ocean City
Call: 609-674-3417
Email to: mak@bergerrealty.com

Scan to see Property page.

