

Berger Realty

Since 1926



Berger Realty, Inc.
3160 Asbury Avenue
Ocean City, NJ 08226
1-877-237-4371 / 609-399-0076
info@bergerrealty.com

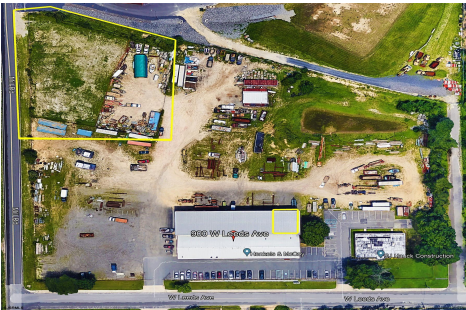


900 Leeds avenue, Pleasantville, NJ, 08232

Price \$0.00

PROPERTY DETAILS

| | |
|--------------|----------|
| Total Rooms | |
| Bedrooms | 0 |
| Baths Full | 0 |
| Baths Half | 0 |
| Year Built | |
| Type | |
| Block Number | 200 |
| Listing # | 582508 |
| Taxes | 17906.00 |



COMMENTS

Prime Location for Atlantic County Services! This centrally located property offers a spacious 3,000 SF warehouse, along with two separate yard spaces, perfect for contractors or construction equipment storage. Conveniently situated near Atlantic City and major road networks, it provides easy access for businesses and clients alike. Lease rates: Yard #9 \$1500; Yard #10 \$...

PROPERTY FEATURES

| | | | |
|-------------|---------------|--------|--------------|
| Exterior | ParkingGarage | Water | Sewer |
| See Remarks | Off Street | Public | Public Sewer |

CONTACT



Ask for John Clarke
Berger Realty Inc
3160 Asbury Avenue, Ocean City
Call: 609-289-6111
Email to: jwc@bergerrealty.com

Scan to see Property page.



Berger Realty

Since 1926



Berger Realty, Inc.
3160 Asbury Avenue
Ocean City, NJ 08226
1-877-237-4371 / 609-399-0076
info@bergerrealty.com

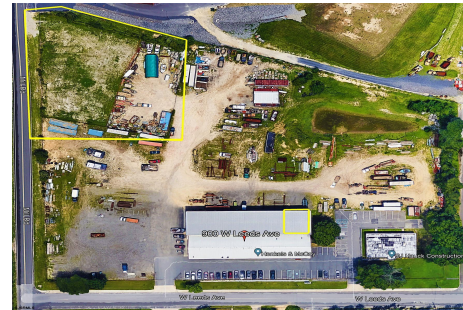


900 Leeds avenue, Pleasantville, NJ, 08232

Price \$0.00

PROPERTY DETAILS

| | |
|--------------|----------|
| Total Rooms | |
| Bedrooms | 0 |
| Baths Full | 0 |
| Baths Half | 0 |
| Year Built | |
| Type | |
| Block Number | 200 |
| Listing # | 582508 |
| Taxes | 17906.00 |



COMMENTS

Prime Location for Atlantic County Services! This centrally located property offers a spacious 3,000 SF warehouse, along with two separate yard spaces, perfect for contractors or construction equipment storage. Conveniently situated near Atlantic City and major road networks, it provides easy access for businesses and clients alike. Lease rates: Yard #9 \$1500; Yard #10 \$...

PROPERTY FEATURES

| | | | |
|-------------|---------------|--------|--------------|
| Exterior | ParkingGarage | Water | Sewer |
| See Remarks | Off Street | Public | Public Sewer |

CONTACT



Ask for John Clarke
Berger Realty Inc
3160 Asbury Avenue, Ocean City
Call: 609-289-6111
Email to: jwc@bergerrealty.com

Scan to see Property page.

