

Berger Realty

Since 1926



Berger Realty, Inc.
3160 Asbury Avenue
Ocean City, NJ 08226
1-877-237-4371 / 609-399-0076
info@bergerrealty.com



197 Betsey Scull, Egg Harbor Township, NJ, 08234

Price \$539,000.00

PROPERTY DETAILS

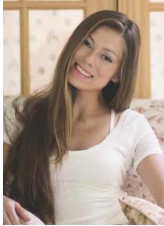
Total Rooms	
Bedrooms	0
Baths Full	0
Baths Half	0
Year Built	
Type	
Block Number	4901
Listing #	582436
Taxes	5086.00

COMMENTS

****BUILDER/DEVELOPER SPECIAL!**** Discover your slice of paradise in Egg Harbor Township with this stunning land for sale totaling over 17 acres- offering a new conditionally approved 3-lot subdivision, set amidst serene woodlands and bordered by a tranquil river with water access and a marina. With DEP approval secured and final subdivision approval pending on March 1st, thi...

PROPERTY FEATURES

CONTACT



Ask for Margarita Kobilianets
Berger Realty Inc
3160 Asbury Avenue, Ocean City
Call: 609-674-3417
Email to: mak@bergerrealty.com

Scan to see Property page.



Berger Realty

Since 1926



Berger Realty, Inc.
3160 Asbury Avenue
Ocean City, NJ 08226
1-877-237-4371 / 609-399-0076
info@bergerrealty.com



197 Betsey Scull, Egg Harbor Township, NJ, 08234

Price \$539,000.00

PROPERTY DETAILS

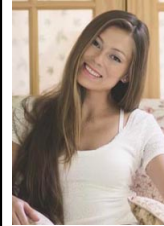
Total Rooms	
Bedrooms	0
Baths Full	0
Baths Half	0
Year Built	
Type	
Block Number	4901
Listing #	582436
Taxes	5086.00

COMMENTS

****BUILDER/DEVELOPER SPECIAL!**** Discover your slice of paradise in Egg Harbor Township with this stunning land for sale totaling over 17 acres- offering a new conditionally approved 3-lot subdivision, set amidst serene woodlands and bordered by a tranquil river with water access and a marina. With DEP approval secured and final subdivision approval pending on March 1st, thi...

PROPERTY FEATURES

CONTACT



Ask for Margarita Kobilianets
Berger Realty Inc
3160 Asbury Avenue, Ocean City
Call: 609-674-3417
Email to: mak@bergerrealty.com

Scan to see Property page.

