

Berger Realty

Since 1928



Berger Realty, Inc.
3160 Asbury Avenue
Ocean City, NJ 08226
1-877-237-4371 / 609-399-0076
info@bergerrealty.com



2318 New Rd, Northfield, NJ, 08225

Price \$350,000.00

PROPERTY DETAILS

| | |
|--------------|---------|
| Total Rooms | |
| Bedrooms | 0 |
| Baths Full | 0 |
| Baths Half | 0 |
| Year Built | |
| Type | |
| Block Number | 82 |
| Listing # | 582090 |
| Taxes | 6111.00 |

COMMENTS

Welcome to 2318 New Rd in Northfield, NJ! This beautifully renovated commercial property offers a unique opportunity for a variety of potential uses. This space has been meticulously transformed with high ceilings and stunning architectural elements, creating a bright and spacious atmosphere. The classic A-frame boasts a total renovation, ensuring that every aspect of the...

PROPERTY FEATURES

| | | | |
|--------------------------------------|--|---|-----------------------|
| OutsideFeatures Sign | ParkingGarage 6 to 10 Spaces Paved | InteriorFeatures Display Windows Handicap Features Restroom Storage | Basement Finished |
| Heating Forced Air Gas-Natural | Cooling Central | Water Public | Sewer Public Sewer |

CONTACT



Ask for Marki Lyn Warlow
Berger Realty Inc
3160 Asbury Avenue, Ocean City
Call:
Email to: mlw@bergerrealty.com

Scan to see Property page.



Berger Realty

Since 1928



Berger Realty, Inc.
3160 Asbury Avenue
Ocean City, NJ 08226
1-877-237-4371 / 609-399-0076
info@bergerrealty.com



2318 New Rd, Northfield, NJ, 08225

Price \$350,000.00

PROPERTY DETAILS

| | |
|--------------|---------|
| Total Rooms | |
| Bedrooms | 0 |
| Baths Full | 0 |
| Baths Half | 0 |
| Year Built | |
| Type | |
| Block Number | 82 |
| Listing # | 582090 |
| Taxes | 6111.00 |

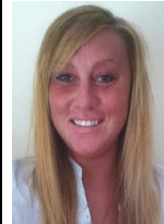
COMMENTS

Welcome to 2318 New Rd in Northfield, NJ! This beautifully renovated commercial property offers a unique opportunity for a variety of potential uses. This space has been meticulously transformed with high ceilings and stunning architectural elements, creating a bright and spacious atmosphere. The classic A-frame boasts a total renovation, ensuring that every aspect of the...

PROPERTY FEATURES

| | | | |
|--------------------------------------|--|---|-----------------------|
| OutsideFeatures Sign | ParkingGarage 6 to 10 Spaces Paved | InteriorFeatures Display Windows Handicap Features Restroom Storage | Basement Finished |
| Heating Forced Air Gas-Natural | Cooling Central | Water Public | Sewer Public Sewer |

CONTACT



Ask for Marki Lyn Warlow
Berger Realty Inc
3160 Asbury Avenue, Ocean City
Call:
Email to: mlw@bergerrealty.com

Scan to see Property page.

