

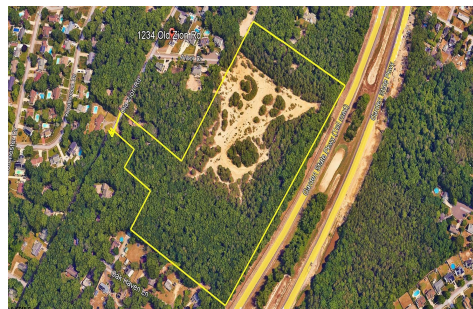


Berger Realty, Inc.
3160 Asbury Avenue
Ocean City, NJ 08226
1-877-237-4371 / 609-399-0076
info@bergerrealty.com



1234 Zion Road, Egg Harbor Township, NJ, 08234

Price \$399,999.00



PROPERTY DETAILS

Total Rooms	
Bedrooms	0
Baths Full	0
Baths Half	0
Year Built	
Type	
Block Number	5608
Listing #	581993
Taxes	4021.00

COMMENTS

Located in Atlantic County, this expansive 21+ acre parcel of land presents an exciting opportunity for development. Preliminary assessments by engineers suggest the potential for constructing up to 22 single-family homes, pending due diligence. This includes ensuring compliance with Pinelands (PDC), a critical step to navigate local regulations and environmental considera...

PROPERTY FEATURES

CONTACT

Berger Realty Inc
3160 Asbury Ave.
Ocean City, NJ 08226
Call: (609) 399-0076
Email to: info@bergerrealty.com
Web: www.bergerrealty.com

Scan to see Property page.

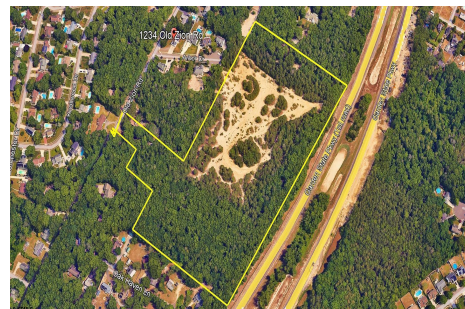


Berger Realty, Inc.
3160 Asbury Avenue
Ocean City, NJ 08226
1-877-237-4371 / 609-399-0076
info@bergerrealty.com



1234 Zion Road, Egg Harbor Township, NJ, 08234

Price \$399,999.00



PROPERTY DETAILS

Total Rooms	
Bedrooms	0
Baths Full	0
Baths Half	0
Year Built	
Type	
Block Number	5608
Listing #	581993
Taxes	4021.00

COMMENTS

Located in Atlantic County, this expansive 21+ acre parcel of land presents an exciting opportunity for development. Preliminary assessments by engineers suggest the potential for constructing up to 22 single-family homes, pending due diligence. This includes ensuring compliance with Pinelands (PDC), a critical step to navigate local regulations and environmental considera...

PROPERTY FEATURES

CONTACT

Berger Realty Inc
3160 Asbury Ave.
Ocean City, NJ 08226
Call: (609) 399-0076
Email to: info@bergerrealty.com
Web: www.bergerrealty.com

Scan to see Property page.

