

# Berger Realty

Since 1928



Berger Realty, Inc.  
3160 Asbury Avenue  
Ocean City, NJ 08226  
1-877-237-4371 / 609-399-0076  
info@bergerrealty.com



502,504 & 506 St Louis & Boston, Galloway Township, NJ,  
08215

Price \$420,000.00



### PROPERTY DETAILS

Total Rooms	
Bedrooms	0
Baths Full	0
Baths Half	0
Year Built	
Type	
Block Number	173
Listing #	581561
Taxes	60.00

### COMMENTS

6 individual lots being sold together totaling 1.31 acres. Each lot is 137.50X69.64. The lots are between St Louis Ave and Boston Ave. There is a sewer line on St Louis Ave, which is unimproved at this time. Boston Ave is a paper street. Seller will have an easement to cross thru front property's driveway at 1300 Aloe St. to gain access to Aloe St. Property currently has ...

### PROPERTY FEATURES

### CONTACT



Ask for Sara Varani  
Berger Realty Inc  
3160 Asbury Avenue, Ocean City  
Call:  
Email to: sev@bergerrealty.com

Scan to see Property page.



# Berger Realty

Since 1928



Berger Realty, Inc.  
3160 Asbury Avenue  
Ocean City, NJ 08226  
1-877-237-4371 / 609-399-0076  
info@bergerrealty.com



502,504 & 506 St Louis & Boston, Galloway Township, NJ,  
08215

Price \$420,000.00



### PROPERTY DETAILS

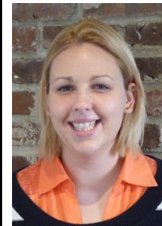
Total Rooms	
Bedrooms	0
Baths Full	0
Baths Half	0
Year Built	
Type	
Block Number	173
Listing #	581561
Taxes	60.00

### COMMENTS

6 individual lots being sold together totaling 1.31 acres. Each lot is 137.50X69.64. The lots are between St Louis Ave and Boston Ave. There is a sewer line on St Louis Ave, which is unimproved at this time. Boston Ave is a paper street. Seller will have an easement to cross thru front property's driveway at 1300 Aloe St. to gain access to Aloe St. Property currently has ...

### PROPERTY FEATURES

### CONTACT



Ask for Sara Varani  
Berger Realty Inc  
3160 Asbury Avenue, Ocean City  
Call:  
Email to: sev@bergerrealty.com

Scan to see Property page.

