

# Berger Realty

Since 1926



Berger Realty, Inc.  
3160 Asbury Avenue  
Ocean City, NJ 08226  
1-877-237-4371 / 609-399-0076  
info@bergerrealty.com



105 Leo, Egg Harbor Township, NJ, 08234

Price \$34,999.00

### PROPERTY DETAILS

Total Rooms	
Bedrooms	0
Baths Full	0
Baths Half	0
Year Built	
Type	
Block Number	2803
Listing #	581497
Taxes	163.00

### COMMENTS

**SELLER DOES NOT HAVE ANY APPROVALS. BUYER MUST DO THEIR OWN DUE DILIGENCE.** Residential lot in understated neighborhood at the end of Leo Avenue. A 1/4 Pineland credit due to be purchased for individual lot sales. For multiple lot sales, the Buyer must do their own due diligence. Utilities are available. **BUYER MUST DO THEIR OWN DUE DILIGENCE....**

### PROPERTY FEATURES

### CONTACT



Ask for Sara Varani  
Berger Realty Inc  
3160 Asbury Avenue, Ocean City  
Call:  
Email to: sev@bergerrealty.com

Scan to see Property page.



# Berger Realty

Since 1926



Berger Realty, Inc.  
3160 Asbury Avenue  
Ocean City, NJ 08226  
1-877-237-4371 / 609-399-0076  
info@bergerrealty.com



105 Leo, Egg Harbor Township, NJ, 08234

Price \$34,999.00

### PROPERTY DETAILS

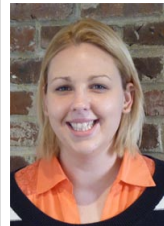
Total Rooms	
Bedrooms	0
Baths Full	0
Baths Half	0
Year Built	
Type	
Block Number	2803
Listing #	581497
Taxes	163.00

### COMMENTS

**SELLER DOES NOT HAVE ANY APPROVALS. BUYER MUST DO THEIR OWN DUE DILIGENCE.** Residential lot in understated neighborhood at the end of Leo Avenue. A 1/4 Pineland credit due to be purchased for individual lot sales. For multiple lot sales, the Buyer must do their own due diligence. Utilities are available. **BUYER MUST DO THEIR OWN DUE DILIGENCE....**

### PROPERTY FEATURES

### CONTACT



Ask for Sara Varani  
Berger Realty Inc  
3160 Asbury Avenue, Ocean City  
Call:  
Email to: sev@bergerrealty.com

Scan to see Property page.

