

# Berger Realty

Since 1926



Berger Realty, Inc  
1330 Bay Avenue  
Ocean City, NJ 08226  
609-391-1330/609-391-1300  
info@bergerrealty.com



390 Steelmanville Road, Egg Harbor Township, NJ, 08234

Price \$35,000.00

### PROPERTY DETAILS

Total Rooms	
Bedrooms	0
Baths Full	0
Baths Half	0
Year Built	
Type	
Block Number	6901
Listing #	580710
Taxes	2124.00

### COMMENTS

*Serene wooded lot, only 15 minutes from Ocean City, endless possibilities. Survey and soil report in associated docs. Buyer responsible for all due diligence and approvals including utilities, setbacks, wetlands, CAFRA, etc....*

### PROPERTY FEATURES

### CONTACT



Ask for Karen J. Manley  
Berger Realty Inc  
1330 Bay Avenue, Ocean City  
Call:  
Email to: [kjm@bergerrealty.com](mailto:kjm@bergerrealty.com)

Scan to see Property page.



# Berger Realty

Since 1926



Berger Realty, Inc  
1330 Bay Avenue  
Ocean City, NJ 08226  
609-391-1330/609-391-1300  
info@bergerrealty.com



390 Steelmanville Road, Egg Harbor Township, NJ, 08234

Price \$35,000.00

### PROPERTY DETAILS

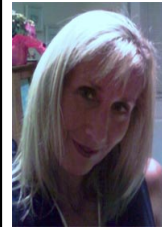
Total Rooms	
Bedrooms	0
Baths Full	0
Baths Half	0
Year Built	
Type	
Block Number	6901
Listing #	580710
Taxes	2124.00

### COMMENTS

*Serene wooded lot, only 15 minutes from Ocean City, endless possibilities. Survey and soil report in associated docs. Buyer responsible for all due diligence and approvals including utilities, setbacks, wetlands, CAFRA, etc....*

### PROPERTY FEATURES

### CONTACT



Ask for Karen J. Manley  
Berger Realty Inc  
1330 Bay Avenue, Ocean City  
Call:  
Email to: [kjm@bergerrealty.com](mailto:kjm@bergerrealty.com)

Scan to see Property page.

