

Berger Realty

Since 1928

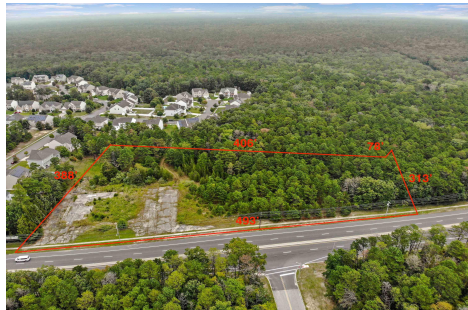


Berger Realty, Inc.
3160 Asbury Avenue
Ocean City, NJ 08226
1-877-237-4371 / 609-399-0076
info@bergerrealty.com



4865 Black Horse, Mays Landing, NJ, 08330

Price \$375,000.00



PROPERTY DETAILS

| | |
|--------------|---------|
| Total Rooms | |
| Bedrooms | 0 |
| Baths Full | 0 |
| Baths Half | 0 |
| Year Built | |
| Type | |
| Block Number | 40 |
| Listing # | 580702 |
| Taxes | 5942.00 |

COMMENTS

Welcome to an extraordinary opportunity to own 3.67 acres of pristine land with a vast frontage of 493 feet in the coveted Cologne section of Hamilton Township. Nestled adjacent to the esteemed Cedar Point Housing Development, this parcel of land has available utilities and the sidewalks are already installed. It holds immense promise and history. Some of the KEY FEATURES ...

PROPERTY FEATURES

CONTACT



Ask for Zachary French
Berger Realty Inc
3160 Asbury Avenue, Ocean City
Call: 609-425-8247
Email to: zcf@bergerrealty.com

Scan to see Property page.



Berger Realty

Since 1928



Berger Realty, Inc.
3160 Asbury Avenue
Ocean City, NJ 08226
1-877-237-4371 / 609-399-0076
info@bergerrealty.com



4865 Black Horse, Mays Landing, NJ, 08330

Price \$375,000.00



PROPERTY DETAILS

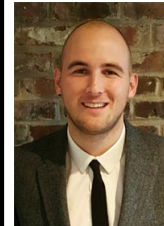
| | |
|--------------|---------|
| Total Rooms | |
| Bedrooms | 0 |
| Baths Full | 0 |
| Baths Half | 0 |
| Year Built | |
| Type | |
| Block Number | 40 |
| Listing # | 580702 |
| Taxes | 5942.00 |

COMMENTS

Welcome to an extraordinary opportunity to own 3.67 acres of pristine land with a vast frontage of 493 feet in the coveted Cologne section of Hamilton Township. Nestled adjacent to the esteemed Cedar Point Housing Development, this parcel of land has available utilities and the sidewalks are already installed. It holds immense promise and history. Some of the KEY FEATURES ...

PROPERTY FEATURES

CONTACT



Ask for Zachary French
Berger Realty Inc
3160 Asbury Avenue, Ocean City
Call: 609-425-8247
Email to: zcf@bergerrealty.com

Scan to see Property page.

