

# Berger Realty

Since 1928

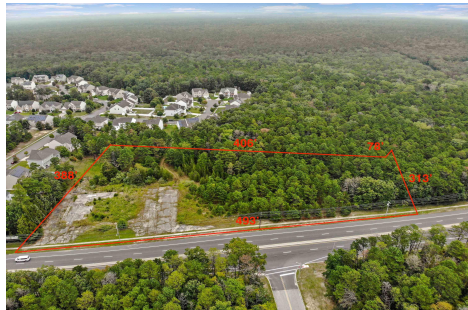


Berger Realty, Inc.  
3160 Asbury Avenue  
Ocean City, NJ 08226  
1-877-237-4371 / 609-399-0076  
info@bergerrealty.com



4865 Black Horse, Mays Landing, NJ, 08330

Price \$375,000.00



### PROPERTY DETAILS

Total Rooms	
Bedrooms	0
Baths Full	0
Baths Half	0
Year Built	
Type	
Block Number	40
Listing #	580702
Taxes	5942.00

### COMMENTS

Welcome to an extraordinary opportunity to own 3.67 acres of pristine land with a vast frontage of 493 feet in the coveted Cologne section of Hamilton Township. Nestled adjacent to the esteemed Cedar Point Housing Development, this parcel of land has available utilities and the sidewalks are already installed. It holds immense promise and history. Some of the KEY FEATURES ...

### PROPERTY FEATURES

### CONTACT



Ask for Tanya Pinkerton  
Berger Realty Inc  
3160 Asbury Avenue, Ocean City  
Call: 609-442-0418  
Email to: tp@bergerrealty.com

Scan to see Property page.



# Berger Realty

Since 1928



Berger Realty, Inc.  
3160 Asbury Avenue  
Ocean City, NJ 08226  
1-877-237-4371 / 609-399-0076  
info@bergerrealty.com



4865 Black Horse, Mays Landing, NJ, 08330

Price \$375,000.00



### PROPERTY DETAILS

Total Rooms	
Bedrooms	0
Baths Full	0
Baths Half	0
Year Built	
Type	
Block Number	40
Listing #	580702
Taxes	5942.00

### COMMENTS

Welcome to an extraordinary opportunity to own 3.67 acres of pristine land with a vast frontage of 493 feet in the coveted Cologne section of Hamilton Township. Nestled adjacent to the esteemed Cedar Point Housing Development, this parcel of land has available utilities and the sidewalks are already installed. It holds immense promise and history. Some of the KEY FEATURES ...

### PROPERTY FEATURES

### CONTACT



Ask for Tanya Pinkerton  
Berger Realty Inc  
3160 Asbury Avenue, Ocean City  
Call: 609-442-0418  
Email to: tp@bergerrealty.com

Scan to see Property page.

