

# Berger Realty

Since 1926



Berger Realty, Inc.  
3160 Asbury Avenue  
Ocean City, NJ 08226  
1-877-237-4371 / 609-399-0076  
info@bergerrealty.com



121 Anna St, Cape May Court House, NJ, 08210

Price \$25,000.00

### PROPERTY DETAILS

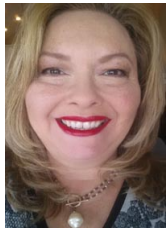
Total Rooms	0
Bedrooms	0
Baths Full	0
Baths Half	0
Year Built	
Type	
Block Number	17
Listing #	578741
Taxes	89.00

### COMMENTS

*Buildable lot being sold with Letter of Interpretation from Dept of Environmental Protection allowing development on existing wetlands. Buyer is advised to due their own due diligence and Buyer will be responsible for U&O. Being sold as a package with 119 E Anna. Contact Listing Agent with questions, interest, etc....*

### PROPERTY FEATURES

### CONTACT



Ask for Theresa Maina  
Berger Realty Inc  
3160 Asbury Avenue, Ocean City  
Call: 609-703-7725  
Email to: tam@bergerrealty.com

Scan to see Property page.



# Berger Realty

Since 1926



Berger Realty, Inc.  
3160 Asbury Avenue  
Ocean City, NJ 08226  
1-877-237-4371 / 609-399-0076  
info@bergerrealty.com



121 Anna St, Cape May Court House, NJ, 08210

Price \$25,000.00

### PROPERTY DETAILS

Total Rooms	0
Bedrooms	0
Baths Full	0
Baths Half	0
Year Built	
Type	
Block Number	17
Listing #	578741
Taxes	89.00

### COMMENTS

*Buildable lot being sold with Letter of Interpretation from Dept of Environmental Protection allowing development on existing wetlands. Buyer is advised to due their own due diligence and Buyer will be responsible for U&O. Being sold as a package with 119 E Anna. Contact Listing Agent with questions, interest, etc....*

### PROPERTY FEATURES

### CONTACT



Ask for Theresa Maina  
Berger Realty Inc  
3160 Asbury Avenue, Ocean City  
Call: 609-703-7725  
Email to: tam@bergerrealty.com

Scan to see Property page.

