



Berger Realty, Inc.
3160 Asbury Avenue
Ocean City, NJ 08226
1-877-237-4371 / 609-399-0076
info@bergerrealty.com



121 Anna St, Cape May Court House, NJ, 08210

Price \$22,500.00



PROPERTY DETAILS

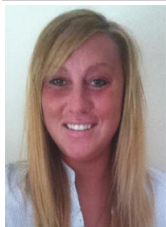
Total Rooms	
Bedrooms	0
Baths Full	0
Baths Half	0
Year Built	
Type	
Block Number	17
Listing #	578741
Taxes	89.00

COMMENTS

Buildable lot being sold with Letter of Interpretation from Dept of Environmental Protection allowing development on existing wetlands. Buyer is advised to due their own due diligence and Buyer will be responsible for U&O. Being sold as a package with 119 E Anna. Contact Listing Agent with questions, interest, etc....

PROPERTY FEATURES

CONTACT



Ask for Marki Lyn Warlow
Berger Realty Inc
3160 Asbury Avenue, Ocean City
Call:
Email to: mlw@bergerrealty.com

Scan to see Property page.



Berger Realty, Inc.
3160 Asbury Avenue
Ocean City, NJ 08226
1-877-237-4371 / 609-399-0076
info@bergerrealty.com



121 Anna St, Cape May Court House, NJ, 08210

Price \$22,500.00



PROPERTY DETAILS

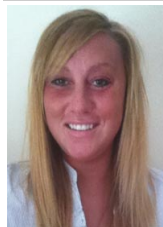
Total Rooms	
Bedrooms	0
Baths Full	0
Baths Half	0
Year Built	
Type	
Block Number	17
Listing #	578741
Taxes	89.00

COMMENTS

Buildable lot being sold with Letter of Interpretation from Dept of Environmental Protection allowing development on existing wetlands. Buyer is advised to due their own due diligence and Buyer will be responsible for U&O. Being sold as a package with 119 E Anna. Contact Listing Agent with questions, interest, etc....

PROPERTY FEATURES

CONTACT



Ask for Marki Lyn Warlow
Berger Realty Inc
3160 Asbury Avenue, Ocean City
Call:
Email to: mlw@bergerrealty.com

Scan to see Property page.

