

Berger Realty

Since 1926



Ocean 17
1670 Boardwalk
Ocean City, NJ 08226
609-391-0500

oc17@BergerRealty.com



Route 50 (County Blvd), Mays Landing, NJ, 08330

Price \$59,000.00

PROPERTY DETAILS



Total Rooms	
Bedrooms	0
Baths Full	0
Baths Half	0
Year Built	
Type	
Block Number	845
Listing #	578328
Taxes	1775.00

COMMENTS

Lot contains 5.66 acres with 400\ of frontage in RD-5 zone. Building can be set 120\ from road based on approvals. Great are to spread out and buil the home of your dreams....

PROPERTY FEATURES

CONTACT



Ask for Margarita Kobilianets
Berger Realty Inc
1670 Boardwalk, Ocean City
Call: 609-674-3417
Email to: mak@bergerrealty.com

Scan to see Property page.



Berger Realty

Since 1926



Ocean 17
1670 Boardwalk
Ocean City, NJ 08226
609-391-0500

oc17@BergerRealty.com



Route 50 (County Blvd), Mays Landing, NJ, 08330

Price \$59,000.00

PROPERTY DETAILS



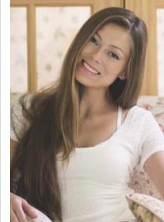
Total Rooms	
Bedrooms	0
Baths Full	0
Baths Half	0
Year Built	
Type	
Block Number	845
Listing #	578328
Taxes	1775.00

COMMENTS

Lot contains 5.66 acres with 400\ of frontage in RD-5 zone. Building can be set 120\ from road based on approvals. Great are to spread out and buil the home of your dreams....

PROPERTY FEATURES

CONTACT



Ask for Margarita Kobilianets
Berger Realty Inc
1670 Boardwalk, Ocean City
Call: 609-674-3417
Email to: mak@bergerrealty.com

Scan to see Property page.

