

# Berger Realty

Since 1926



Berger Realty, Inc.  
3160 Asbury Avenue  
Ocean City, NJ 08226  
1-877-237-4371 / 609-399-0076  
info@bergerrealty.com

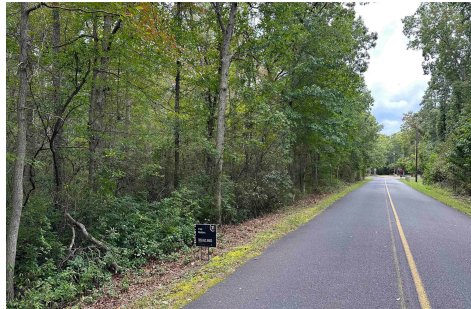


165 Fourth, Estell Manor, NJ, 08319

Price \$49,900.00

### PROPERTY DETAILS

Total Rooms	
Bedrooms	0
Baths Full	0
Baths Half	0
Year Built	
Type	
Block Number	21
Listing #	578120
Taxes	633.00



### COMMENTS

*5 Acre wooded lot in desirable Estell Manor. Lots of privacy and still a short distance to the beach. There are wetlands that will likely require the home to located closer to the corner. Priced low as Buyer responsible for all approvals....*

### PROPERTY FEATURES

### CONTACT



Ask for Evelyn "Evie" Schweibinz  
Berger Realty Inc  
3160 Asbury Avenue, Ocean City  
Call:  
Email to: [ems@bergerrealty.com](mailto:ems@bergerrealty.com)

Scan to see Property page.



# Berger Realty

Since 1926



Berger Realty, Inc.  
3160 Asbury Avenue  
Ocean City, NJ 08226  
1-877-237-4371 / 609-399-0076  
info@bergerrealty.com

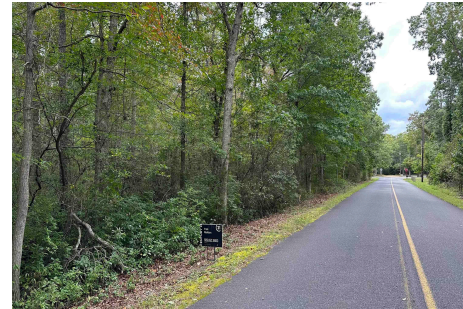


165 Fourth, Estell Manor, NJ, 08319

Price \$49,900.00

### PROPERTY DETAILS

Total Rooms	
Bedrooms	0
Baths Full	0
Baths Half	0
Year Built	
Type	
Block Number	21
Listing #	578120
Taxes	633.00

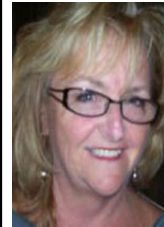


### COMMENTS

*5 Acre wooded lot in desirable Estell Manor. Lots of privacy and still a short distance to the beach. There are wetlands that will likely require the home to located closer to the corner. Priced low as Buyer responsible for all approvals....*

### PROPERTY FEATURES

### CONTACT



Ask for Evelyn "Evie" Schweibinz  
Berger Realty Inc  
3160 Asbury Avenue, Ocean City  
Call:  
Email to: [ems@bergerrealty.com](mailto:ems@bergerrealty.com)

Scan to see Property page.

