

Berger Realty

Since 1926



Berger Realty, Inc.
3160 Asbury Avenue
Ocean City, NJ 08226
1-877-237-4371 / 609-399-0076
info@bergerrealty.com



615 Black Horse Pike, Pleasantville, NJ, 08232

Price \$679,427.00



PROPERTY DETAILS

| | |
|--------------|----------|
| Total Rooms | |
| Bedrooms | 0 |
| Baths Full | 0 |
| Baths Half | 0 |
| Year Built | |
| Type | |
| Block Number | 429 |
| Listing # | 578056 |
| Taxes | 20316.00 |

COMMENTS

PRIME HIGHWAY LOCATION SURROUNDED BY KFC, POPEYE'S, BURGER KING, MOD CAR WASH, ETC... CLOSE TO WALMART & SAM'S. TRAFFIC SIGNAL NEARBY. UEZ LOCATION (TAX DISCOUNTS). STRAIGHT SHOT TO ATLANTIC CITY. IDEAL FOR RETAIL OR OFFICE, APPX 3,000 SF WITH 25+ PARKING SPACES. ALSO AVAILABLE FOR LEASE AT \$4500/MO NNN...

PROPERTY FEATURES

| | | | |
|------------|-----------------|-------------------|--------------|
| Exterior | OutsideFeatures | ParkingGarage | Basement |
| Brick | See Remarks | 11 or More Spaces | Slab |
| | | Off Street | |
| | | Paved | |
| Heating | Cooling | Water | Sewer |
| Forced Air | Central | Public | Public Sewer |

CONTACT



Ask for Karen A. Becker
Berger Realty Inc
3160 Asbury Avenue, Ocean City
Call: 609-364-0999
Email to: kab@bergerrealty.com

Scan to see Property page.



Berger Realty

Since 1926

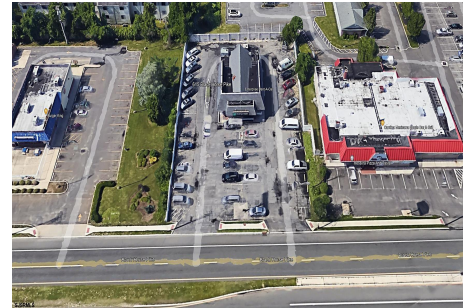


Berger Realty, Inc.
3160 Asbury Avenue
Ocean City, NJ 08226
1-877-237-4371 / 609-399-0076
info@bergerrealty.com



615 Black Horse Pike, Pleasantville, NJ, 08232

Price \$679,427.00



PROPERTY DETAILS

| | |
|--------------|----------|
| Total Rooms | |
| Bedrooms | 0 |
| Baths Full | 0 |
| Baths Half | 0 |
| Year Built | |
| Type | |
| Block Number | 429 |
| Listing # | 578056 |
| Taxes | 20316.00 |

COMMENTS

PRIME HIGHWAY LOCATION SURROUNDED BY KFC, POPEYE'S, BURGER KING, MOD CAR WASH, ETC... CLOSE TO WALMART & SAM'S. TRAFFIC SIGNAL NEARBY. UEZ LOCATION (TAX DISCOUNTS). STRAIGHT SHOT TO ATLANTIC CITY. IDEAL FOR RETAIL OR OFFICE, APPX 3,000 SF WITH 25+ PARKING SPACES. ALSO AVAILABLE FOR LEASE AT \$4500/MO NNN...

PROPERTY FEATURES

| | | | |
|------------|-----------------|-------------------|--------------|
| Exterior | OutsideFeatures | ParkingGarage | Basement |
| Brick | See Remarks | 11 or More Spaces | Slab |
| | | Off Street | |
| | | Paved | |
| Heating | Cooling | Water | Sewer |
| Forced Air | Central | Public | Public Sewer |

CONTACT



Ask for Karen A. Becker
Berger Realty Inc
3160 Asbury Avenue, Ocean City
Call: 609-364-0999
Email to: kab@bergerrealty.com

Scan to see Property page.

