

Berger Realty

Since 1928



Berger Realty, Inc.
3160 Asbury Avenue
Ocean City, NJ 08226
1-877-237-4371 / 609-399-0076
info@bergerrealty.com



615 Black Horse Pike, Pleasantville, NJ, 08232

Price \$679,427.00



PROPERTY DETAILS

Total Rooms	
Bedrooms	0
Baths Full	0
Baths Half	0
Year Built	
Type	
Block Number	429
Listing #	578056
Taxes	20316.00

COMMENTS

PRIME HIGHWAY LOCATION SURROUNDED BY KFC, POPEYE'S, BURGER KING, MOD CAR WASH, ETC... CLOSE TO WALMART & SAM'S. TRAFFIC SIGNAL NEARBY. UEZ LOCATION (TAX DISCOUNTS). STRAIGHT SHOT TO ATLANTIC CITY. IDEAL FOR RETAIL OR OFFICE, APPX 3,000 SF WITH 25+ PARKING SPACES. ALSO AVAILABLE FOR LEASE AT \$4500/MO NNN...

PROPERTY FEATURES

Exterior	OutsideFeatures	ParkingGarage	Basement
Brick	See Remarks	11 or More Spaces Off Street Paved	Slab
Heating	Cooling	Water	Sewer
Forced Air	Central	Public	Public Sewer

CONTACT



Ask for Denise Kelley
Berger Realty Inc
3160 Asbury Avenue, Ocean City
Call: 609-703-2706
Email to: dlk@bergerrealty.com

Scan to see Property page.



Berger Realty

Since 1928

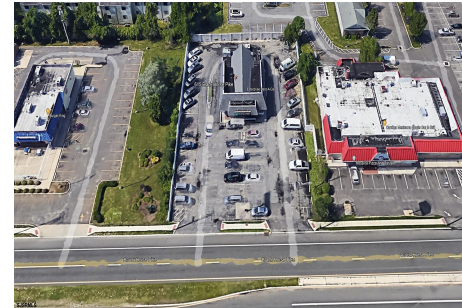


Berger Realty, Inc.
3160 Asbury Avenue
Ocean City, NJ 08226
1-877-237-4371 / 609-399-0076
info@bergerrealty.com



615 Black Horse Pike, Pleasantville, NJ, 08232

Price \$679,427.00



PROPERTY DETAILS

Total Rooms	
Bedrooms	0
Baths Full	0
Baths Half	0
Year Built	
Type	
Block Number	429
Listing #	578056
Taxes	20316.00

COMMENTS

PRIME HIGHWAY LOCATION SURROUNDED BY KFC, POPEYE'S, BURGER KING, MOD CAR WASH, ETC... CLOSE TO WALMART & SAM'S. TRAFFIC SIGNAL NEARBY. UEZ LOCATION (TAX DISCOUNTS). STRAIGHT SHOT TO ATLANTIC CITY. IDEAL FOR RETAIL OR OFFICE, APPX 3,000 SF WITH 25+ PARKING SPACES. ALSO AVAILABLE FOR LEASE AT \$4500/MO NNN...

PROPERTY FEATURES

Exterior	OutsideFeatures	ParkingGarage	Basement
Brick	See Remarks	11 or More Spaces Off Street Paved	Slab
Heating	Cooling	Water	Sewer
Forced Air	Central	Public	Public Sewer

CONTACT



Ask for Denise Kelley
Berger Realty Inc
3160 Asbury Avenue, Ocean City
Call: 609-703-2706
Email to: dlk@bergerrealty.com

Scan to see Property page.

