

# Berger Realty

Since 1928



Berger Realty, Inc.  
3160 Asbury Avenue  
Ocean City, NJ 08226  
1-877-237-4371 / 609-399-0076  
info@bergerrealty.com



615 Black Horse Pike, Pleasantville, NJ, 08232

Price \$679,427.00



### PROPERTY DETAILS

Total Rooms	
Bedrooms	0
Baths Full	0
Baths Half	0
Year Built	
Type	
Block Number	429
Listing #	578056
Taxes	20316.00

### COMMENTS

**PRIME HIGHWAY LOCATION SURROUNDED BY KFC, POPEYE'S, BURGER KING, MOD CAR WASH, ETC... CLOSE TO WALMART & SAM'S. TRAFFIC SIGNAL NEARBY. UEZ LOCATION (TAX DISCOUNTS). STRAIGHT SHOT TO ATLANTIC CITY. IDEAL FOR RETAIL OR OFFICE, APPX 3,000 SF WITH 25+ PARKING SPACES. ALSO AVAILABLE FOR LEASE AT \$4500/MO NNN...**

### PROPERTY FEATURES

Exterior	OutsideFeatures	ParkingGarage	Basement
Brick	See Remarks	11 or More Spaces Off Street Paved	Slab
Heating	Cooling	Water	Sewer
Forced Air	Central	Public	Public Sewer

### CONTACT



Ask for Tony Bono  
Berger Realty Inc  
3160 Asbury Avenue, Ocean City  
Call:  
Email to: ab@bergerrealty.com

Scan to see Property page.



# Berger Realty

Since 1928

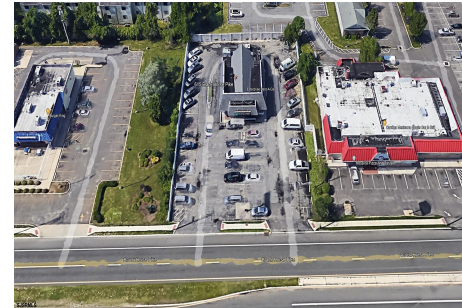


Berger Realty, Inc.  
3160 Asbury Avenue  
Ocean City, NJ 08226  
1-877-237-4371 / 609-399-0076  
info@bergerrealty.com



615 Black Horse Pike, Pleasantville, NJ, 08232

Price \$679,427.00



### PROPERTY DETAILS

Total Rooms	
Bedrooms	0
Baths Full	0
Baths Half	0
Year Built	
Type	
Block Number	429
Listing #	578056
Taxes	20316.00

### COMMENTS

**PRIME HIGHWAY LOCATION SURROUNDED BY KFC, POPEYE'S, BURGER KING, MOD CAR WASH, ETC... CLOSE TO WALMART & SAM'S. TRAFFIC SIGNAL NEARBY. UEZ LOCATION (TAX DISCOUNTS). STRAIGHT SHOT TO ATLANTIC CITY. IDEAL FOR RETAIL OR OFFICE, APPX 3,000 SF WITH 25+ PARKING SPACES. ALSO AVAILABLE FOR LEASE AT \$4500/MO NNN...**

### PROPERTY FEATURES

Exterior	OutsideFeatures	ParkingGarage	Basement
Brick	See Remarks	11 or More Spaces Off Street Paved	Slab
Heating	Cooling	Water	Sewer
Forced Air	Central	Public	Public Sewer

### CONTACT



Ask for Tony Bono  
Berger Realty Inc  
3160 Asbury Avenue, Ocean City  
Call:  
Email to: ab@bergerrealty.com

Scan to see Property page.

