

Berger Realty

Since 1928



Berger Realty, Inc.
3160 Asbury Avenue
Ocean City, NJ 08226
1-877-237-4371 / 609-399-0076
info@bergerrealty.com



6418 Reega Ave, Egg Harbor Township, NJ, 08234

Price \$175,000.00

PROPERTY DETAILS

Total Rooms	
Bedrooms	0
Baths Full	0
Baths Half	0
Year Built	
Type	
Block Number	1807
Listing #	577814
Taxes	1180.00

COMMENTS

***** Major price improvement - call today for details! *** Explore limitless possibilities on this expansive 6.24+/- acre parcel of unimproved land in the heart of Egg Harbor Township, NJ! Whether you're envisioning a potential sub-division project or the construction of your dream home surrounded by abundant privacy, this property offers a canvas for your imagination to ...**

PROPERTY FEATURES

CONTACT



Ask for Lauren Greiner
Berger Realty Inc
3160 Asbury Avenue, Ocean City
Call: 609-602-5960
Email to: lmg@bergerrealty.com

Scan to see Property page.



Berger Realty

Since 1928



Berger Realty, Inc.
3160 Asbury Avenue
Ocean City, NJ 08226
1-877-237-4371 / 609-399-0076
info@bergerrealty.com



6418 Reega Ave, Egg Harbor Township, NJ, 08234

Price \$175,000.00

PROPERTY DETAILS

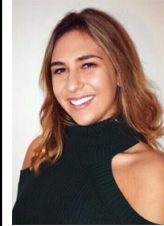
Total Rooms	
Bedrooms	0
Baths Full	0
Baths Half	0
Year Built	
Type	
Block Number	1807
Listing #	577814
Taxes	1180.00

COMMENTS

***** Major price improvement - call today for details! *** Explore limitless possibilities on this expansive 6.24+/- acre parcel of unimproved land in the heart of Egg Harbor Township, NJ! Whether you're envisioning a potential sub-division project or the construction of your dream home surrounded by abundant privacy, this property offers a canvas for your imagination to ...**

PROPERTY FEATURES

CONTACT



Ask for Lauren Greiner
Berger Realty Inc
3160 Asbury Avenue, Ocean City
Call: 609-602-5960
Email to: lmg@bergerrealty.com

Scan to see Property page.

