

Berger Realty

Since 1926



Berger Realty, Inc.
3160 Asbury Avenue
Ocean City, NJ 08226
1-877-237-4371 / 609-399-0076
info@bergerrealty.com

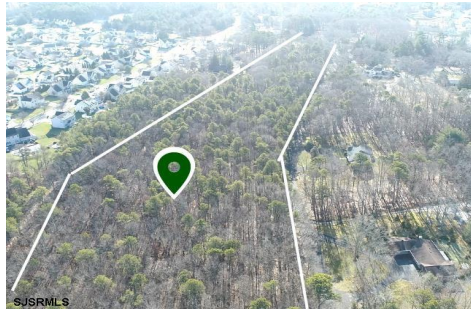


500 Delaware, Egg Harbor Township, NJ, 08234

Price \$159,000.00

PROPERTY DETAILS

Total Rooms	0
Bedrooms	0
Baths Full	0
Baths Half	0
Year Built	
Type	
Block Number	5401
Listing #	575500
Taxes	3048.00



COMMENTS

UNIQUE OPPORTUNITY FOR DEVELOPERS, BUILDERS AND FOR YOU! This amazing undeveloped and unimproved land on a private road can possibly be divided into multiple residential lots or you can build YOUR OWN PRIVATE HOME subject to Pineland certificate of filing. One of a kind private street in a desirable neighborhood with stately and meticulously manicured entrance. Tranquil wi...

PROPERTY FEATURES

CONTACT



Ask for J.K. Hepner, III
Berger Realty Inc
3160 Asbury Avenue, Ocean City
Call: 609-457-9457
Email to: jkh@bergerrealty.com

Scan to see Property page.



Berger Realty

Since 1926



Berger Realty, Inc.
3160 Asbury Avenue
Ocean City, NJ 08226
1-877-237-4371 / 609-399-0076
info@bergerrealty.com

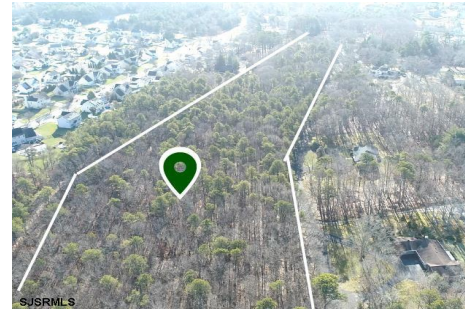


500 Delaware, Egg Harbor Township, NJ, 08234

Price \$159,000.00

PROPERTY DETAILS

Total Rooms	0
Bedrooms	0
Baths Full	0
Baths Half	0
Year Built	
Type	
Block Number	5401
Listing #	575500
Taxes	3048.00



COMMENTS

UNIQUE OPPORTUNITY FOR DEVELOPERS, BUILDERS AND FOR YOU! This amazing undeveloped and unimproved land on a private road can possibly be divided into multiple residential lots or you can build YOUR OWN PRIVATE HOME subject to Pineland certificate of filing. One of a kind private street in a desirable neighborhood with stately and meticulously manicured entrance. Tranquil wi...

PROPERTY FEATURES

CONTACT



Ask for J.K. Hepner, III
Berger Realty Inc
3160 Asbury Avenue, Ocean City
Call: 609-457-9457
Email to: jkh@bergerrealty.com

Scan to see Property page.

