

Berger Realty

Since 1928



Berger Realty, Inc.
3160 Asbury Avenue
Ocean City, NJ 08226
1-877-237-4371 / 609-399-0076
info@bergerrealty.com



0 Buttonwood Road Road Road Road, Egg Harbor
Township, NJ, 08234

Price \$19,900.00



PROPERTY DETAILS

Total Rooms	
Bedrooms	0
Baths Full	0
Baths Half	0
Year Built	
Type	
Block Number	5105-0000-
Listing #	575480
Taxes	500.00

COMMENTS

PRICED TO SELL! 2 contiguous lots in Egg Harbor Township below Ocean Heights Blvd and just past Plumleaf and Ocean Blvd. 0 Buttonwood and 0 Wynnewood--lots, 3 and 4 together to create over an acre makes this a buildable lot. Septic and well needed and 200ft by 200ft to build one house. Buyer to do all due diligence. Nice, wooded area below the English Creek and not in floo...

PROPERTY FEATURES

CONTACT



Ask for Sara Varani
Berger Realty Inc
3160 Asbury Avenue, Ocean City
Call:
Email to: sev@bergerrealty.com

Scan to see Property page.



Berger Realty

Since 1928



Berger Realty, Inc.
3160 Asbury Avenue
Ocean City, NJ 08226
1-877-237-4371 / 609-399-0076
info@bergerrealty.com



0 Buttonwood Road Road Road Road, Egg Harbor
Township, NJ, 08234

Price \$19,900.00



PROPERTY DETAILS

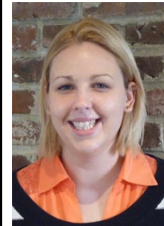
Total Rooms	
Bedrooms	0
Baths Full	0
Baths Half	0
Year Built	
Type	
Block Number	5105-0000-
Listing #	575480
Taxes	500.00

COMMENTS

PRICED TO SELL! 2 contiguous lots in Egg Harbor Township below Ocean Heights Blvd and just past Plumleaf and Ocean Blvd. 0 Buttonwood and 0 Wynnewood--lots, 3 and 4 together to create over an acre makes this a buildable lot. Septic and well needed and 200ft by 200ft to build one house. Buyer to do all due diligence. Nice, wooded area below the English Creek and not in floo...

PROPERTY FEATURES

CONTACT



Ask for Sara Varani
Berger Realty Inc
3160 Asbury Avenue, Ocean City
Call:
Email to: sev@bergerrealty.com

Scan to see Property page.

