

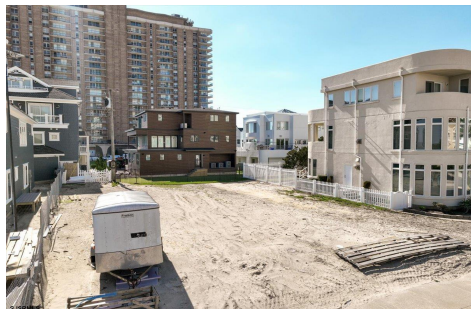


Berger Realty, Inc.  
3160 Asbury Avenue  
Ocean City, NJ 08226  
1-877-237-4371 / 609-399-0076  
info@bergerrealty.com



130 Montgomery, Atlantic City, NJ, 08401

Price \$1,100,000.00



#### PROPERTY DETAILS

Total Rooms	0
Bedrooms	0
Baths Full	0
Baths Half	0
Year Built	
Type	
Block Number	3
Listing #	574646
Taxes	10110.00

#### COMMENTS

**BUILD YOUR FUTURE BEACH HOME ON THIS 5,100 SQFT LOT** that is ideally situated in Lower Chelsea and merely one block away from Ventnor!! Spanning an impressive 60x85 in size, this parcel offers ample space for a 4500+ SF home. Situated merely steps away from the beach, it boasts breathtaking views that extend northward, encompassing the Boardwalk and the beautiful beach area...

#### PROPERTY FEATURES

#### CONTACT



Ask for Lauren Greiner  
Berger Realty Inc  
3160 Asbury Avenue, Ocean City  
Call: 609-602-5960  
Email to: lmg@bergerrealty.com

Scan to see Property page.

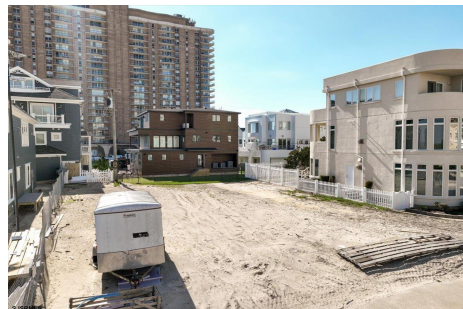


Berger Realty, Inc.  
3160 Asbury Avenue  
Ocean City, NJ 08226  
1-877-237-4371 / 609-399-0076  
info@bergerrealty.com



130 Montgomery, Atlantic City, NJ, 08401

Price \$1,100,000.00



#### PROPERTY DETAILS

Total Rooms	0
Bedrooms	0
Baths Full	0
Baths Half	0
Year Built	
Type	
Block Number	3
Listing #	574646
Taxes	10110.00

#### COMMENTS

**BUILD YOUR FUTURE BEACH HOME ON THIS 5,100 SQFT LOT** that is ideally situated in Lower Chelsea and merely one block away from Ventnor!! Spanning an impressive 60x85 in size, this parcel offers ample space for a 4500+ SF home. Situated merely steps away from the beach, it boasts breathtaking views that extend northward, encompassing the Boardwalk and the beautiful beach area...

#### PROPERTY FEATURES

#### CONTACT



Ask for Lauren Greiner  
Berger Realty Inc  
3160 Asbury Avenue, Ocean City  
Call: 609-602-5960  
Email to: lmg@bergerrealty.com

Scan to see Property page.

