

Berger Realty

Since 1926

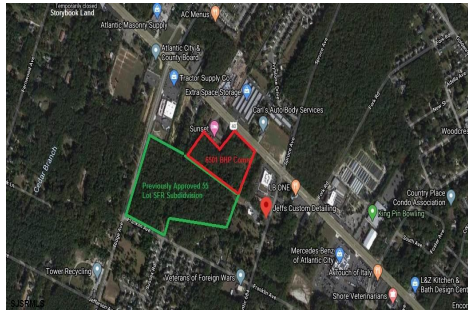


Berger Realty, Inc.
3160 Asbury Avenue
Ocean City, NJ 08226
1-877-237-4371 / 609-399-0076
info@bergerrealty.com



108 Franklin Ave, Egg Harbor Township, NJ, 08234

Price \$1,500,000.00



PROPERTY DETAILS

Total Rooms	
Bedrooms	0
Baths Full	0
Baths Half	0
Year Built	
Type	
Block Number	1901
Listing #	574054
Taxes	57021.00

COMMENTS

Previously Approved 55+- Lot Subdivision that will need possible updating from the Township and Pinelands. Site will be serviced by Public Water, Sewer, Cable, Electric. Subdivision can be developed in phases. Approvals were drafted by local professionals who would like the opportunity to meet with new buyers to review plans, permits, and approvals to see what changes may ...

PROPERTY FEATURES

CONTACT



Ask for Michelle Benson
Berger Realty Inc
3160 Asbury Avenue, Ocean City
Call: 609-425-5886
Email to: mb@bergerrealty.com

Scan to see Property page.



Berger Realty

Since 1926

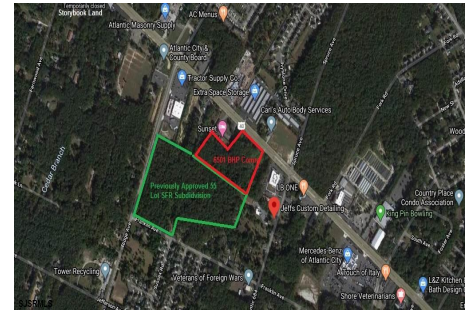


Berger Realty, Inc.
3160 Asbury Avenue
Ocean City, NJ 08226
1-877-237-4371 / 609-399-0076
info@bergerrealty.com



108 Franklin Ave, Egg Harbor Township, NJ, 08234

Price \$1,500,000.00



PROPERTY DETAILS

Total Rooms	
Bedrooms	0
Baths Full	0
Baths Half	0
Year Built	
Type	
Block Number	1901
Listing #	574054
Taxes	57021.00

COMMENTS

Previously Approved 55+- Lot Subdivision that will need possible updating from the Township and Pinelands. Site will be serviced by Public Water, Sewer, Cable, Electric. Subdivision can be developed in phases. Approvals were drafted by local professionals who would like the opportunity to meet with new buyers to review plans, permits, and approvals to see what changes may ...

PROPERTY FEATURES

CONTACT



Ask for Michelle Benson
Berger Realty Inc
3160 Asbury Avenue, Ocean City
Call: 609-425-5886
Email to: mb@bergerrealty.com

Scan to see Property page.

