

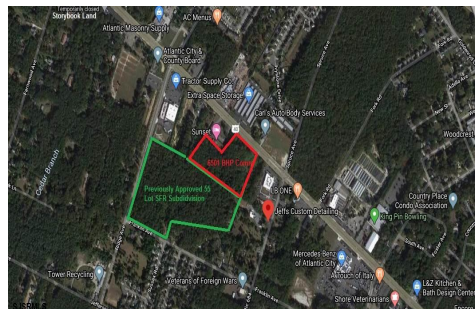


Berger Realty, Inc.  
3160 Asbury Avenue  
Ocean City, NJ 08226  
1-877-237-4371 / 609-399-0076  
info@bergerrealty.com



108 Franklin Ave, Egg Harbor Township, NJ, 08234

Price \$1,500,000.00



#### PROPERTY DETAILS

Total Rooms	
Bedrooms	0
Baths Full	0
Baths Half	0
Year Built	
Type	
Block Number	1901
Listing #	574054
Taxes	57021.00

#### COMMENTS

*Previously Approved 55+- Lot Subdivision that will need possible updating from the Township and Pinelands. Site will be serviced by Public Water, Sewer, Cable, Electric. Subdivision can be developed in phases. Approvals were drafted by local professionals who would like the opportunity to meet with new buyers to review plans, permits, and approvals to see what changes may ...*

#### PROPERTY FEATURES

#### CONTACT



Ask for Jeff Thompson  
Berger Realty Inc  
3160 Asbury Avenue, Ocean City  
Call: 609-780-0050  
Email to: jst@bergerrealty.com

Scan to see Property page.

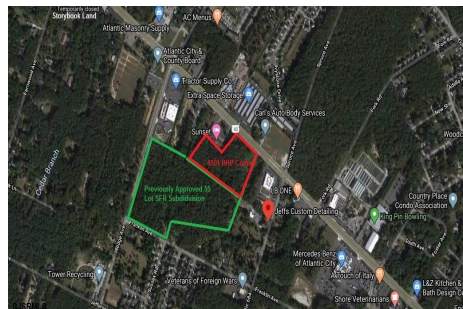


Berger Realty, Inc.  
3160 Asbury Avenue  
Ocean City, NJ 08226  
1-877-237-4371 / 609-399-0076  
info@bergerrealty.com



108 Franklin Ave, Egg Harbor Township, NJ, 08234

Price \$1,500,000.00



#### PROPERTY DETAILS

Total Rooms	
Bedrooms	0
Baths Full	0
Baths Half	0
Year Built	
Type	
Block Number	1901
Listing #	574054
Taxes	57021.00

#### COMMENTS

*Previously Approved 55+- Lot Subdivision that will need possible updating from the Township and Pinelands. Site will be serviced by Public Water, Sewer, Cable, Electric. Subdivision can be developed in phases. Approvals were drafted by local professionals who would like the opportunity to meet with new buyers to review plans, permits, and approvals to see what changes may ...*

#### PROPERTY FEATURES

#### CONTACT



Ask for Jeff Thompson  
Berger Realty Inc  
3160 Asbury Avenue, Ocean City  
Call: 609-780-0050  
Email to: jst@bergerrealty.com

Scan to see Property page.

