



Berger Realty, Inc.  
3160 Asbury Avenue  
Ocean City, NJ 08226  
1-877-237-4371 / 609-399-0076  
info@bergerrealty.com



5091-5093 English Creek Avenue, Egg Harbor Township, NJ,  
08234

Price \$950,000.00



#### PROPERTY DETAILS

Total Rooms	
Bedrooms	0
Baths Full	0
Baths Half	0
Year Built	
Type	
Block Number	3226
Listing #	570778
Taxes	23000.00

#### COMMENTS

*Approximately 8.9 acres of wooded land on English Creek Ave close to the corner of Ocean Heights Ave. Zoned NB Commercial. Close proximity to many business and residential areas. 400\ of road frontage. Great location for many business opportunities. 2 parcels spanning from English Creek Ave back to Virginia Ave....*

#### PROPERTY FEATURES

#### CONTACT



Ask for Tanya Pinkerton  
Berger Realty Inc  
3160 Asbury Avenue, Ocean City  
Call: 609-442-0418  
Email to: tp@bergerrealty.com

Scan to see Property page.

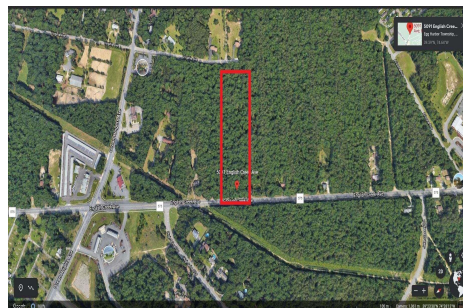


Berger Realty, Inc.  
3160 Asbury Avenue  
Ocean City, NJ 08226  
1-877-237-4371 / 609-399-0076  
info@bergerrealty.com



5091-5093 English Creek Avenue, Egg Harbor Township, NJ,  
08234

Price \$950,000.00



#### PROPERTY DETAILS

Total Rooms	
Bedrooms	0
Baths Full	0
Baths Half	0
Year Built	
Type	
Block Number	3226
Listing #	570778
Taxes	23000.00

#### COMMENTS

*Approximately 8.9 acres of wooded land on English Creek Ave close to the corner of Ocean Heights Ave. Zoned NB Commercial. Close proximity to many business and residential areas. 400\ of road frontage. Great location for many business opportunities. 2 parcels spanning from English Creek Ave back to Virginia Ave....*

#### PROPERTY FEATURES

#### CONTACT



Ask for Tanya Pinkerton  
Berger Realty Inc  
3160 Asbury Avenue, Ocean City  
Call: 609-442-0418  
Email to: tp@bergerrealty.com

Scan to see Property page.

