

Berger Realty

Since 1926

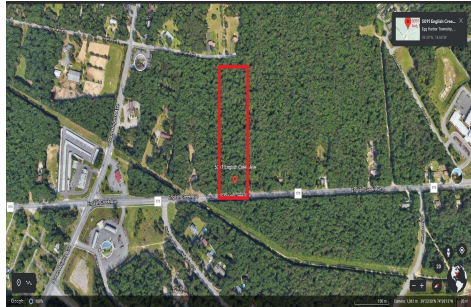


Berger Realty, Inc
1330 Bay Avenue
Ocean City, NJ 08226
609-391-1330/609-391-1300
info@bergerrealty.com



5091-5093 English Creek Avenue, Egg Harbor Township, NJ,
08234

Price \$950,000.00



PROPERTY DETAILS

Total Rooms	
Bedrooms	0
Baths Full	0
Baths Half	0
Year Built	
Type	
Block Number	3226
Listing #	570778
Taxes	23000.00

COMMENTS

Approximately 8.9 acres of wooded land on English Creek Ave close to the corner of Ocean Heights Ave. Zoned NB Commercial. Close proximity to many business and residential areas. 400' of road frontage. Great location for many business opportunities. 2 parcels spanning from English Creek Ave back to Virginia Ave....

PROPERTY FEATURES

CONTACT

Ask for Louis Paone
Berger Realty Inc
1330 Bay Avenue, Ocean City
Call:
Email to: lsp@bergerrealty.com

Scan to see Property page.



Berger Realty

Since 1926



Berger Realty, Inc
1330 Bay Avenue
Ocean City, NJ 08226
609-391-1330/609-391-1300
info@bergerrealty.com



5091-5093 English Creek Avenue, Egg Harbor Township, NJ,
08234

Price \$950,000.00



PROPERTY DETAILS

Total Rooms	
Bedrooms	0
Baths Full	0
Baths Half	0
Year Built	
Type	
Block Number	3226
Listing #	570778
Taxes	23000.00

COMMENTS

Approximately 8.9 acres of wooded land on English Creek Ave close to the corner of Ocean Heights Ave. Zoned NB Commercial. Close proximity to many business and residential areas. 400' of road frontage. Great location for many business opportunities. 2 parcels spanning from English Creek Ave back to Virginia Ave....

PROPERTY FEATURES

CONTACT

Ask for Louis Paone
Berger Realty Inc
1330 Bay Avenue, Ocean City
Call:
Email to: lsp@bergerrealty.com

Scan to see Property page.

