

Berger Realty

Since 1926



Berger Realty, Inc.
3160 Asbury Avenue
Ocean City, NJ 08226
1-877-237-4371 / 609-399-0076
info@bergerrealty.com



342 Pearl Pl, Atlantic City, NJ, 08401

Price \$10,000.00



PROPERTY DETAILS

| | |
|--------------|--------|
| Total Rooms | |
| Bedrooms | 0 |
| Baths Full | 0 |
| Baths Half | 0 |
| Year Built | |
| Type | |
| Block Number | 434 |
| Listing # | 570716 |
| Taxes | 242.00 |

COMMENTS

While currently undeveloped, the property holds exciting possibilities subject to city approval. Partner with the City's Planning Department to explore zoning regulations and discuss potential uses for the land. The seller is motivated and welcomes your offer to bring this property to life. The buyer is responsible for all approvals....

PROPERTY FEATURES

CONTACT



Ask for Marki Lyn Warlow
Berger Realty Inc
3160 Asbury Avenue, Ocean City
Call:
Email to: mlw@bergerrealty.com

Scan to see Property page.



Berger Realty

Since 1926



Berger Realty, Inc.
3160 Asbury Avenue
Ocean City, NJ 08226
1-877-237-4371 / 609-399-0076
info@bergerrealty.com



342 Pearl Pl, Atlantic City, NJ, 08401

Price \$10,000.00



PROPERTY DETAILS

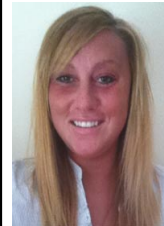
| | |
|--------------|--------|
| Total Rooms | |
| Bedrooms | 0 |
| Baths Full | 0 |
| Baths Half | 0 |
| Year Built | |
| Type | |
| Block Number | 434 |
| Listing # | 570716 |
| Taxes | 242.00 |

COMMENTS

While currently undeveloped, the property holds exciting possibilities subject to city approval. Partner with the City's Planning Department to explore zoning regulations and discuss potential uses for the land. The seller is motivated and welcomes your offer to bring this property to life. The buyer is responsible for all approvals....

PROPERTY FEATURES

CONTACT



Ask for Marki Lyn Warlow
Berger Realty Inc
3160 Asbury Avenue, Ocean City
Call:
Email to: mlw@bergerrealty.com

Scan to see Property page.

