

Berger Realty

Since 1926

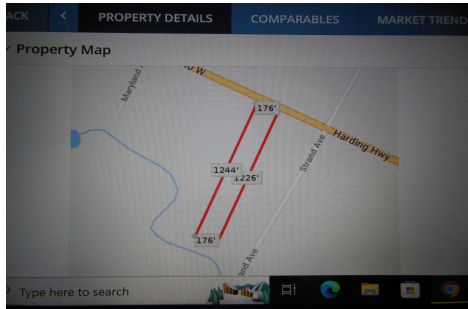


Berger Realty, Inc.
3160 Asbury Avenue
Ocean City, NJ 08226
1-877-237-4371 / 609-399-0076
info@bergerrealty.com



Harding, Mays Landing, NJ, 08234

Price \$25,000.00



PROPERTY DETAILS

| | |
|--------------|---------|
| Total Rooms | |
| Bedrooms | 0 |
| Baths Full | 0 |
| Baths Half | 0 |
| Year Built | |
| Type | |
| Block Number | 537 |
| Listing # | 570323 |
| Taxes | 1632.00 |

COMMENTS

5.09 acres on Harding Hwy. 176' road frontage. Any questions should be answered by the buyers own due diligence.....

PROPERTY FEATURES

CONTACT



Ask for Tara Cruser-Moss
Berger Realty Inc
3160 Asbury Avenue, Ocean City
Call: 609-317-5396
Email to: tcm@bergerrealty.com

Scan to see Property page.



Berger Realty

Since 1926

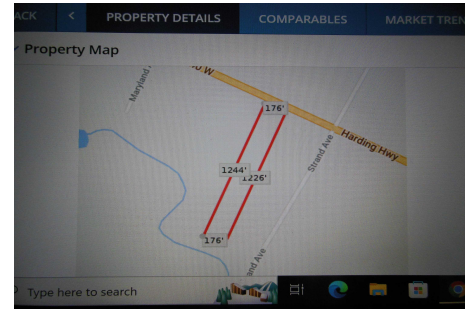


Berger Realty, Inc.
3160 Asbury Avenue
Ocean City, NJ 08226
1-877-237-4371 / 609-399-0076
info@bergerrealty.com



Harding, Mays Landing, NJ, 08234

Price \$25,000.00



PROPERTY DETAILS

| | |
|--------------|---------|
| Total Rooms | |
| Bedrooms | 0 |
| Baths Full | 0 |
| Baths Half | 0 |
| Year Built | |
| Type | |
| Block Number | 537 |
| Listing # | 570323 |
| Taxes | 1632.00 |

COMMENTS

5.09 acres on Harding Hwy. 176' road frontage. Any questions should be answered by the buyers own due diligence.....

PROPERTY FEATURES

CONTACT



Ask for Tara Cruser-Moss
Berger Realty Inc
3160 Asbury Avenue, Ocean City
Call: 609-317-5396
Email to: tcm@bergerrealty.com

Scan to see Property page.

