

Berger Realty

Since 1926

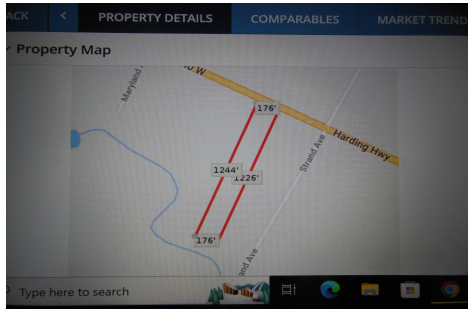


Berger Realty, Inc.
3160 Asbury Avenue
Ocean City, NJ 08226
1-877-237-4371 / 609-399-0076
info@bergerrealty.com



Harding, Mays Landing, NJ, 08234

Price \$25,000.00



PROPERTY DETAILS

Total Rooms	
Bedrooms	0
Baths Full	0
Baths Half	0
Year Built	
Type	
Block Number	537
Listing #	570323
Taxes	1632.00

COMMENTS

5.09 acres on Harding Hwy. 176' road frontage. Any questions should be answered by the buyers own due diligence.....

PROPERTY FEATURES

CONTACT



Ask for Matthew Bader
Berger Realty Inc
3160 Asbury Avenue, Ocean City
Call: 609-992-4380
Email to: mhb@bergerrealty.com
http://www.BADERCOLLINS.com

Scan to see Property page.



Berger Realty

Since 1926

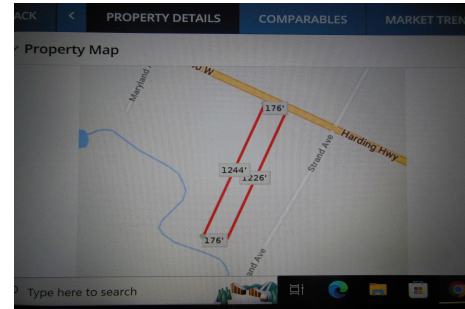


Berger Realty, Inc.
3160 Asbury Avenue
Ocean City, NJ 08226
1-877-237-4371 / 609-399-0076
info@bergerrealty.com



Harding, Mays Landing, NJ, 08234

Price \$25,000.00



PROPERTY DETAILS

Total Rooms	
Bedrooms	0
Baths Full	0
Baths Half	0
Year Built	
Type	
Block Number	537
Listing #	570323
Taxes	1632.00

COMMENTS

5.09 acres on Harding Hwy. 176' road frontage. Any questions should be answered by the buyers own due diligence.....

PROPERTY FEATURES

CONTACT



Ask for Matthew Bader
Berger Realty Inc
3160 Asbury Avenue, Ocean City
Call: 609-992-4380
Email to: mhb@bergerrealty.com
http://www.BADERCOLLINS.com

Scan to see Property page.

