

# Berger Realty

Since 1926

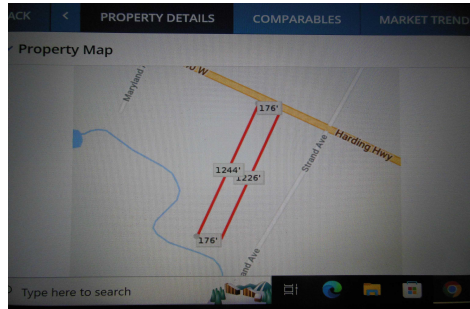


Berger Realty, Inc.  
3160 Asbury Avenue  
Ocean City, NJ 08226  
1-877-237-4371 / 609-399-0076  
info@bergerrealty.com



Harding, Mays Landing, NJ, 08234

Price \$25,000.00



### PROPERTY DETAILS

Total Rooms	
Bedrooms	0
Baths Full	0
Baths Half	0
Year Built	
Type	
Block Number	537
Listing #	570323
Taxes	1632.00

### COMMENTS

5.09 acres on Harding Hwy. 176' road frontage. Any questions should be answered by the buyers own due diligence.....

### PROPERTY FEATURES

### CONTACT



Ask for Francis Cuomo  
Berger Realty Inc  
3160 Asbury Avenue, Ocean City  
Call: 609-305-3503  
Email to: fmc@bergerrealty.com

Scan to see Property page.



# Berger Realty

Since 1926

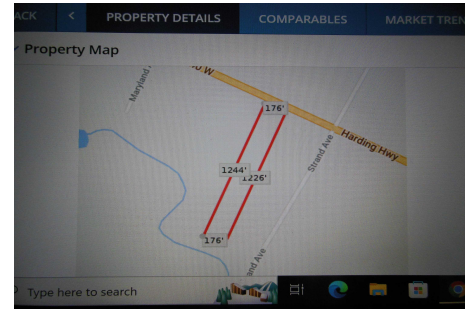


Berger Realty, Inc.  
3160 Asbury Avenue  
Ocean City, NJ 08226  
1-877-237-4371 / 609-399-0076  
info@bergerrealty.com



Harding, Mays Landing, NJ, 08234

Price \$25,000.00



### PROPERTY DETAILS

Total Rooms	
Bedrooms	0
Baths Full	0
Baths Half	0
Year Built	
Type	
Block Number	537
Listing #	570323
Taxes	1632.00

### COMMENTS

5.09 acres on Harding Hwy. 176' road frontage. Any questions should be answered by the buyers own due diligence.....

### PROPERTY FEATURES

### CONTACT



Ask for Francis Cuomo  
Berger Realty Inc  
3160 Asbury Avenue, Ocean City  
Call: 609-305-3503  
Email to: fmc@bergerrealty.com

Scan to see Property page.

