

Berger Realty

Since 1928



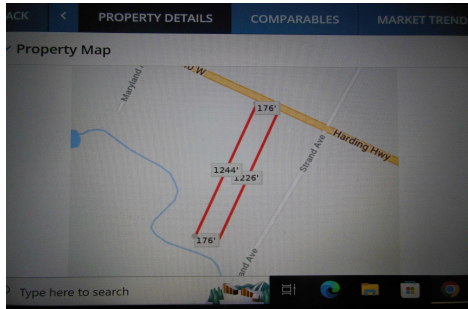
Ocean 17
1670 Boardwalk
Ocean City, NJ 08226
609-391-0500

oc17@BergerRealty.com



Harding, Mays Landing, NJ, 08234

Price \$25,000.00



PROPERTY DETAILS

Total Rooms	
Bedrooms	0
Baths Full	0
Baths Half	0
Year Built	
Type	
Block Number	537
Listing #	570323
Taxes	1632.00

COMMENTS

5.09 acres on Harding Hwy. 176' road frontage. Any questions should be answered by the buyers own due diligence.....

PROPERTY FEATURES

CONTACT



Ask for Dylan Perry
Berger Realty Inc
1670 Boardwalk, Ocean City
Call: 609-675-6737
Email to: dcp@bergerrealty.com

Scan to see Property page.



Berger Realty

Since 1928



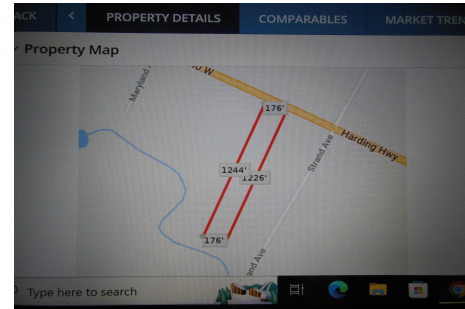
Ocean 17
1670 Boardwalk
Ocean City, NJ 08226
609-391-0500

oc17@BergerRealty.com



Harding, Mays Landing, NJ, 08234

Price \$25,000.00



PROPERTY DETAILS

Total Rooms	
Bedrooms	0
Baths Full	0
Baths Half	0
Year Built	
Type	
Block Number	537
Listing #	570323
Taxes	1632.00

COMMENTS

5.09 acres on Harding Hwy. 176' road frontage. Any questions should be answered by the buyers own due diligence.....

PROPERTY FEATURES

CONTACT



Ask for Dylan Perry
Berger Realty Inc
1670 Boardwalk, Ocean City
Call: 609-675-6737
Email to: dcp@bergerrealty.com

Scan to see Property page.

