

Berger Realty

Since 1926

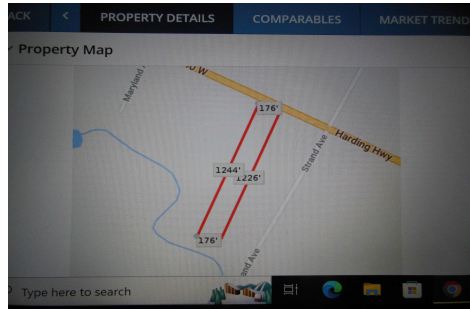


Berger Realty, Inc
1330 Bay Avenue
Ocean City, NJ 08226
609-391-1330/609-391-1300
info@bergerrealty.com



Harding, Mays Landing, NJ, 08234

Price \$25,000.00



PROPERTY DETAILS

Total Rooms	
Bedrooms	0
Baths Full	0
Baths Half	0
Year Built	
Type	
Block Number	537
Listing #	570323
Taxes	1632.00

COMMENTS

5.09 acres on Harding Hwy. 176' road frontage. Any questions should be answered by the buyers own due diligence.....

PROPERTY FEATURES

CONTACT



Ask for Cassidy Fletcher
Berger Realty Inc
1330 Bay Avenue, Ocean City
Call: 609-425-6121
Email to: crf@bergerrealty.com

Scan to see Property page.



Berger Realty

Since 1926

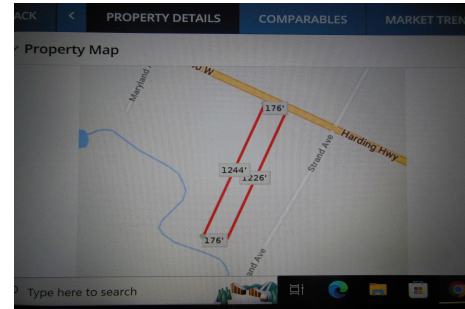


Berger Realty, Inc
1330 Bay Avenue
Ocean City, NJ 08226
609-391-1330/609-391-1300
info@bergerrealty.com



Harding, Mays Landing, NJ, 08234

Price \$25,000.00



PROPERTY DETAILS

Total Rooms	
Bedrooms	0
Baths Full	0
Baths Half	0
Year Built	
Type	
Block Number	537
Listing #	570323
Taxes	1632.00

COMMENTS

5.09 acres on Harding Hwy. 176' road frontage. Any questions should be answered by the buyers own due diligence.....

PROPERTY FEATURES

CONTACT



Ask for Cassidy Fletcher
Berger Realty Inc
1330 Bay Avenue, Ocean City
Call: 609-425-6121
Email to: crf@bergerrealty.com

Scan to see Property page.

