

Berger Realty

Since 1926



Berger Realty, Inc.
3160 Asbury Avenue
Ocean City, NJ 08226
1-877-237-4371 / 609-399-0076
info@bergerrealty.com



2509 Tilton Rd, Egg Harbor Township, NJ, 08234

Price \$699,000.00

PROPERTY DETAILS

Total Rooms	
Bedrooms	0
Baths Full	0
Baths Half	0
Year Built	
Type	
Block Number	301
Listing #	569028
Taxes	10378.00



COMMENTS

PRIME USE! Motel, hotel, retail, manufacturing, fabrication, warehouse, cannabis, storage, medical, restaurant, laboratory, gaming, distribution, banking, recreation and education facility uses. Owner retiring and wants this sold. Bring all offers!...

PROPERTY FEATURES

CONTACT

Berger Realty Inc
3160 Asbury Ave.
Ocean City, NJ 08226
Call: (609) 399-0076
Email to: info@bergerrealty.com
Web: www.bergerrealty.com

Scan to see Property page.



Berger Realty

Since 1926



Berger Realty, Inc.
3160 Asbury Avenue
Ocean City, NJ 08226
1-877-237-4371 / 609-399-0076
info@bergerrealty.com

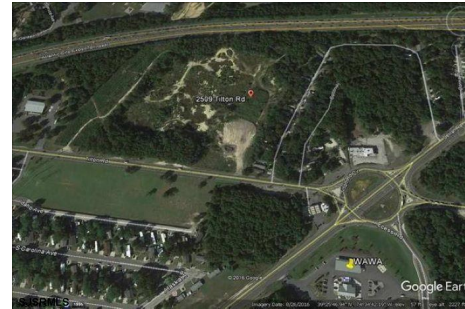


2509 Tilton Rd, Egg Harbor Township, NJ, 08234

Price \$699,000.00

PROPERTY DETAILS

Total Rooms	
Bedrooms	0
Baths Full	0
Baths Half	0
Year Built	
Type	
Block Number	301
Listing #	569028
Taxes	10378.00



COMMENTS

PRIME USE! Motel, hotel, retail, manufacturing, fabrication, warehouse, cannabis, storage, medical, restaurant, laboratory, gaming, distribution, banking, recreation and education facility uses. Owner retiring and wants this sold. Bring all offers!...

PROPERTY FEATURES

CONTACT

Berger Realty Inc
3160 Asbury Ave.
Ocean City, NJ 08226
Call: (609) 399-0076
Email to: info@bergerrealty.com
Web: www.bergerrealty.com

Scan to see Property page.

