

# Berger Realty

Since 1926

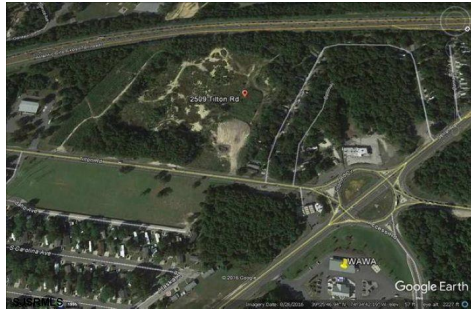


Berger Realty, Inc.  
3160 Asbury Avenue  
Ocean City, NJ 08226  
1-877-237-4371 / 609-399-0076  
info@bergerrealty.com



2509 Tilton Rd, Egg Harbor Township, NJ, 08234

Price \$699,000.00



### PROPERTY DETAILS

Total Rooms	
Bedrooms	0
Baths Full	0
Baths Half	0
Year Built	
Type	
Block Number	301
Listing #	569028
Taxes	10378.00

### COMMENTS

*PRIME USE! Motel, hotel, retail, manufacturing, fabrication, warehouse, cannabis, storage, medical, restaurant, laboratory, gaming, distribution, banking, recreation and education facility uses. Owner retiring and wants this sold. Bring all offers!...*

### PROPERTY FEATURES

### CONTACT



Ask for Karen A. Becker  
Berger Realty Inc  
3160 Asbury Avenue, Ocean City  
Call: 609-364-0999  
Email to: kab@bergerrealty.com

Scan to see Property page.



# Berger Realty

Since 1926

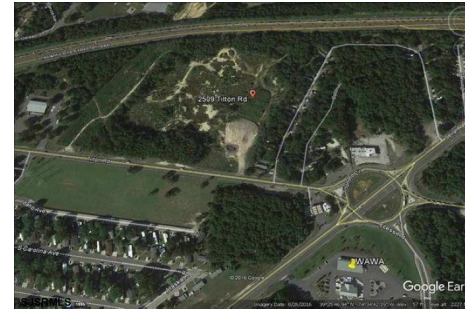


Berger Realty, Inc.  
3160 Asbury Avenue  
Ocean City, NJ 08226  
1-877-237-4371 / 609-399-0076  
info@bergerrealty.com



2509 Tilton Rd, Egg Harbor Township, NJ, 08234

Price \$699,000.00



### PROPERTY DETAILS

Total Rooms	
Bedrooms	0
Baths Full	0
Baths Half	0
Year Built	
Type	
Block Number	301
Listing #	569028
Taxes	10378.00

### COMMENTS

*PRIME USE! Motel, hotel, retail, manufacturing, fabrication, warehouse, cannabis, storage, medical, restaurant, laboratory, gaming, distribution, banking, recreation and education facility uses. Owner retiring and wants this sold. Bring all offers!...*

### PROPERTY FEATURES

### CONTACT



Ask for Karen A. Becker  
Berger Realty Inc  
3160 Asbury Avenue, Ocean City  
Call: 609-364-0999  
Email to: kab@bergerrealty.com

Scan to see Property page.

