

Berger Realty

Since 1926



Berger Realty, Inc.
3160 Asbury Avenue
Ocean City, NJ 08226
1-877-237-4371 / 609-399-0076
info@bergerrealty.com



408 BETHEL ROAD, Somers Point, NJ, 08244

Price \$149,900.00

PROPERTY DETAILS

Total Rooms	
Bedrooms	0
Baths Full	0
Baths Half	0
Year Built	
Type	
Block Number	813
Listing #	565437
Taxes	6516.00

COMMENTS

AVAILABLE IMMEDIATELY IN POINT COMMONS! GREAT 1920 SQ FT 2ND FLOOR LOCATION FOR PROFESSIONAL OR MEDICAL OFFICES IS READY TO OCCUPY WITH 2 WAITING ROOMS, CONFERENCE ROOM, 4 OFFICE OR EXAM ROOMS, KITCHEN, 2 RESTROOMS, ELEVATOR, 2 STAIRCASES AND MORE! OUTSTANDING CENTRAL SOMERS POINT LOCATION MINUTES FROM PRIME MAINLAND COMMUNITIES AND SHORE TOWNS!...

PROPERTY FEATURES

Exterior Frame/Wood	OutsideFeatures Sign	ParkingGarage 11 or More Spaces	InteriorFeatures Elevator Pass Restroom Storage
Heating Electric	Cooling Central	HotWater Electric	Water Public
Sewer Public Sewer			

CONTACT



Ask for Lauren Greiner
Berger Realty Inc
3160 Asbury Avenue, Ocean City
Call: 609-602-5960
Email to: lmg@bergerrealty.com

Scan to see Property page.



Berger Realty

Since 1926



Berger Realty, Inc.
3160 Asbury Avenue
Ocean City, NJ 08226
1-877-237-4371 / 609-399-0076
info@bergerrealty.com



408 BETHEL ROAD, Somers Point, NJ, 08244

Price \$149,900.00

PROPERTY DETAILS

Total Rooms	
Bedrooms	0
Baths Full	0
Baths Half	0
Year Built	
Type	
Block Number	813
Listing #	565437
Taxes	6516.00

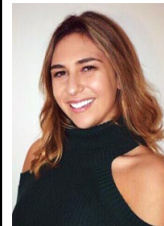
COMMENTS

AVAILABLE IMMEDIATELY IN POINT COMMONS! GREAT 1920 SQ FT 2ND FLOOR LOCATION FOR PROFESSIONAL OR MEDICAL OFFICES IS READY TO OCCUPY WITH 2 WAITING ROOMS, CONFERENCE ROOM, 4 OFFICE OR EXAM ROOMS, KITCHEN, 2 RESTROOMS, ELEVATOR, 2 STAIRCASES AND MORE! OUTSTANDING CENTRAL SOMERS POINT LOCATION MINUTES FROM PRIME MAINLAND COMMUNITIES AND SHORE TOWNS!...

PROPERTY FEATURES

Exterior Frame/Wood	OutsideFeatures Sign	ParkingGarage 11 or More Spaces	InteriorFeatures Elevator Pass Restroom Storage
Heating Electric	Cooling Central	HotWater Electric	Water Public
Sewer Public Sewer			

CONTACT



Ask for Lauren Greiner
Berger Realty Inc
3160 Asbury Avenue, Ocean City
Call: 609-602-5960
Email to: lmg@bergerrealty.com

Scan to see Property page.

