



Berger Realty, Inc.  
3160 Asbury Avenue  
Ocean City, NJ 08226  
1-877-237-4371 / 609-399-0076  
info@bergerrealty.com



51 Jimmie Leeds Rd, Galloway Township, NJ, 08205

Price \$100,000.00



#### PROPERTY DETAILS

Total Rooms	
Bedrooms	0
Baths Full	0
Baths Half	0
Year Built	
Type	
Block Number	949
Listing #	558910
Taxes	4441.00

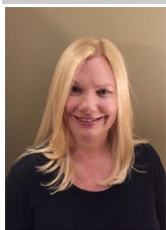
#### COMMENTS

\*\*\*\*\* BUILDABLE LOT ON .85 ACRES\*\*\*\*\* BACKYARD FACING GREAT CREEK RD ACCESS FR JIMMIE LEEDS ROAD AND FROM GREAT CREEK. ZONED FOR OFFICE PROFESSIONAL AS WELL! BUILDABLE LOT ON .55 ACRES INCLUDED IN THIS PRICE....

#### PROPERTY FEATURES

Exterior Vinyl	ParkingGarage 11 or More Spaces Off Street	Basement Crawl Space	Heating Forced Air Gas-Natural
Cooling Central	Water Public	Sewer Public Sewer	

#### CONTACT



Ask for Dawn Warren  
Berger Realty Inc  
3160 Asbury Avenue, Ocean City  
Call: 609-432-4966  
Email to: dew@bergerrealty.com

Scan to see Property page.



Berger Realty, Inc.  
3160 Asbury Avenue  
Ocean City, NJ 08226  
1-877-237-4371 / 609-399-0076  
info@bergerrealty.com



51 Jimmie Leeds Rd, Galloway Township, NJ, 08205

Price \$100,000.00



#### PROPERTY DETAILS

Total Rooms	
Bedrooms	0
Baths Full	0
Baths Half	0
Year Built	
Type	
Block Number	949
Listing #	558910
Taxes	4441.00

#### COMMENTS

\*\*\*\*\* BUILDABLE LOT ON .85 ACRES\*\*\*\*\* BACKYARD FACING GREAT CREEK RD ACCESS FR JIMMIE LEEDS ROAD AND FROM GREAT CREEK. ZONED FOR OFFICE PROFESSIONAL AS WELL! BUILDABLE LOT ON .55 ACRES INCLUDED IN THIS PRICE....

#### PROPERTY FEATURES

Exterior Vinyl	ParkingGarage 11 or More Spaces Off Street	Basement Crawl Space	Heating Forced Air Gas-Natural
Cooling Central	Water Public	Sewer Public Sewer	

#### CONTACT



Ask for Dawn Warren  
Berger Realty Inc  
3160 Asbury Avenue, Ocean City  
Call: 609-432-4966  
Email to: dew@bergerrealty.com

Scan to see Property page.

