

Berger Realty

Since 1926



Berger Realty, Inc.
3160 Asbury Avenue
Ocean City, NJ 08226
1-877-237-4371 / 609-399-0076
info@bergerrealty.com



51 Jimmie Leeds Rd, Galloway Township, NJ, 08205

Price \$100,000.00

PROPERTY DETAILS

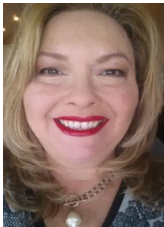
Total Rooms	0
Bedrooms	0
Baths Full	0
Baths Half	0
Year Built	
Type	
Block Number	949
Listing #	558904
Taxes	1086.00

COMMENTS

*****NOW IS YOUR OPPORTUNITY TO GROW AND EXPAND-IN ADDITION TO LOT ADJACENT IS 47 E JIMMIE LEEDS ROAD A RANCH IDEAL FOR YOUR OFFICE/LIVE IN. EXCELLENT HIGHWAY EXPOSURE W/ ACCESS TO JIMMIE LEEDS RD (GALLOWAY'S MAIN STREET) AND GREAT CREEK ROAD. LOT SIZE .55 ACRES ZONED OFFICE/PROFESSIONAL W/ A BUSTLING HIGH GROWTH AREA OF COMMERCIAL/OFFICE PROFESSIONAL AND SINGLE FAM...

PROPERTY FEATURES

CONTACT



Ask for Theresa Maina
Berger Realty Inc
3160 Asbury Avenue, Ocean City
Call: 609-703-7725
Email to: tam@bergerrealty.com

Scan to see Property page.



Berger Realty

Since 1926



Berger Realty, Inc.
3160 Asbury Avenue
Ocean City, NJ 08226
1-877-237-4371 / 609-399-0076
info@bergerrealty.com



51 Jimmie Leeds Rd, Galloway Township, NJ, 08205

Price \$100,000.00

PROPERTY DETAILS

Total Rooms	0
Bedrooms	0
Baths Full	0
Baths Half	0
Year Built	
Type	
Block Number	949
Listing #	558904
Taxes	1086.00

COMMENTS

*****NOW IS YOUR OPPORTUNITY TO GROW AND EXPAND-IN ADDITION TO LOT ADJACENT IS 47 E JIMMIE LEEDS ROAD A RANCH IDEAL FOR YOUR OFFICE/LIVE IN. EXCELLENT HIGHWAY EXPOSURE W/ ACCESS TO JIMMIE LEEDS RD (GALLOWAY'S MAIN STREET) AND GREAT CREEK ROAD. LOT SIZE .55 ACRES ZONED OFFICE/PROFESSIONAL W/ A BUSTLING HIGH GROWTH AREA OF COMMERCIAL/OFFICE PROFESSIONAL AND SINGLE FAM...

PROPERTY FEATURES

CONTACT



Ask for Theresa Maina
Berger Realty Inc
3160 Asbury Avenue, Ocean City
Call: 609-703-7725
Email to: tam@bergerrealty.com

Scan to see Property page.

