

# Berger Realty

Since 1928



Berger Realty, Inc.  
3160 Asbury Avenue  
Ocean City, NJ 08226  
1-877-237-4371 / 609-399-0076  
info@bergerrealty.com



Wrangleboro, Galloway Township, NJ, 08205

Price \$40,000.00



### PROPERTY DETAILS

Total Rooms	
Bedrooms	0
Baths Full	0
Baths Half	0
Year Built	
Type	
Block Number	953.0
Listing #	549919
Taxes	2973.00

### COMMENTS

7.4 acres residential lot that can possibly be subdivided into 3, 2 acre building lots subject to wetlands delineation and other government approvals....

### PROPERTY FEATURES

### CONTACT



Ask for Tanya Pinkerton  
Berger Realty Inc  
3160 Asbury Avenue, Ocean City  
Call: 609-442-0418  
Email to: tp@bergerrealty.com

Scan to see Property page.



# Berger Realty

Since 1928

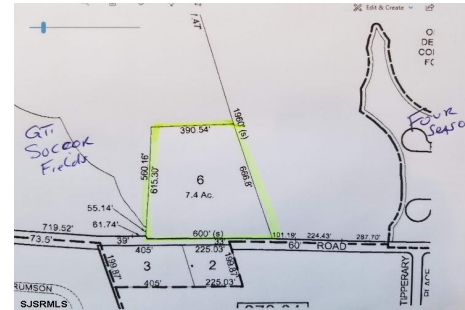


Berger Realty, Inc.  
3160 Asbury Avenue  
Ocean City, NJ 08226  
1-877-237-4371 / 609-399-0076  
info@bergerrealty.com



Wrangleboro, Galloway Township, NJ, 08205

Price \$40,000.00



### PROPERTY DETAILS

Total Rooms	
Bedrooms	0
Baths Full	0
Baths Half	0
Year Built	
Type	
Block Number	953.0
Listing #	549919
Taxes	2973.00

### COMMENTS

7.4 acres residential lot that can possibly be subdivided into 3, 2 acre building lots subject to wetlands delineation and other government approvals....

### PROPERTY FEATURES

### CONTACT



Ask for Tanya Pinkerton  
Berger Realty Inc  
3160 Asbury Avenue, Ocean City  
Call: 609-442-0418  
Email to: tp@bergerrealty.com

Scan to see Property page.

