

Berger Realty

Since 1928

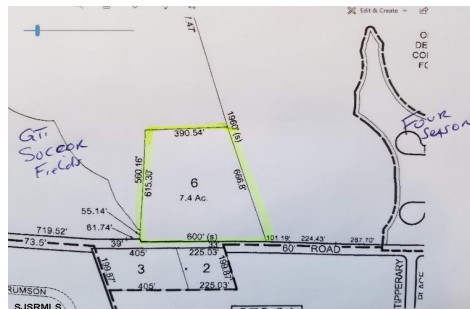


Berger Realty, Inc.
3160 Asbury Avenue
Ocean City, NJ 08226
1-877-237-4371 / 609-399-0076
info@bergerrealty.com



Wrangleboro, Galloway Township, NJ, 08205

Price \$40,000.00



PROPERTY DETAILS

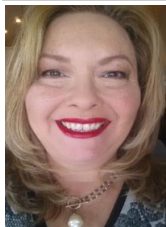
Total Rooms	
Bedrooms	0
Baths Full	0
Baths Half	0
Year Built	
Type	
Block Number	953.0
Listing #	549919
Taxes	2973.00

COMMENTS

7.4 acres residential lot that can possibly be subdivided into 3, 2 acre building lots subject to wetlands delineation and other government approvals....

PROPERTY FEATURES

CONTACT



Ask for Theresa Maina
Berger Realty Inc
3160 Asbury Avenue, Ocean City
Call: 609-703-7725
Email to: tam@bergerrealty.com

Scan to see Property page.



Berger Realty

Since 1928



Berger Realty, Inc.
3160 Asbury Avenue
Ocean City, NJ 08226
1-877-237-4371 / 609-399-0076
info@bergerrealty.com



Wrangleboro, Galloway Township, NJ, 08205

Price \$40,000.00



PROPERTY DETAILS

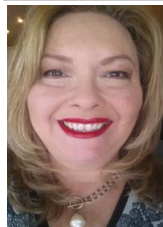
Total Rooms	
Bedrooms	0
Baths Full	0
Baths Half	0
Year Built	
Type	
Block Number	953.0
Listing #	549919
Taxes	2973.00

COMMENTS

7.4 acres residential lot that can possibly be subdivided into 3, 2 acre building lots subject to wetlands delineation and other government approvals....

PROPERTY FEATURES

CONTACT



Ask for Theresa Maina
Berger Realty Inc
3160 Asbury Avenue, Ocean City
Call: 609-703-7725
Email to: tam@bergerrealty.com

Scan to see Property page.

