

Berger Realty

Since 1928



Berger Realty, Inc.
3160 Asbury Avenue
Ocean City, NJ 08226
1-877-237-4371 / 609-399-0076
info@bergerrealty.com



408 Bethel, Somers Point, NJ, 08244

Price \$489,900.00

PROPERTY DETAILS

Total Rooms	
Bedrooms	0
Baths Full	0
Baths Half	0
Year Built	1986
Type	
Block Number	813
Listing #	548702
Taxes	17893.00



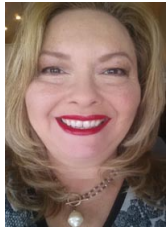
COMMENTS

Professional Office Condo building in a complex with 7 other units, mostly medical. Shell possibilities are endless! Outside has been totally redone. Brand new roof, siding, soffit, fascia and windows. Currently has 6 meters. Finish the interior to your business needs!!...

PROPERTY FEATURES

Exterior	ParkingGarage
See Remarks	11 or More Spaces

CONTACT



Ask for Theresa Maina
Berger Realty Inc
3160 Asbury Avenue, Ocean City
Call: 609-703-7725
Email to: tam@bergerrealty.com

Scan to see Property page.



Berger Realty

Since 1928



Berger Realty, Inc.
3160 Asbury Avenue
Ocean City, NJ 08226
1-877-237-4371 / 609-399-0076
info@bergerrealty.com



408 Bethel, Somers Point, NJ, 08244

Price \$489,900.00

PROPERTY DETAILS

Total Rooms	
Bedrooms	0
Baths Full	0
Baths Half	0
Year Built	1986
Type	
Block Number	813
Listing #	548702
Taxes	17893.00



COMMENTS

Professional Office Condo building in a complex with 7 other units, mostly medical. Shell possibilities are endless! Outside has been totally redone. Brand new roof, siding, soffit, fascia and windows. Currently has 6 meters. Finish the interior to your business needs!!...

PROPERTY FEATURES

Exterior	ParkingGarage
See Remarks	11 or More Spaces

CONTACT



Ask for Theresa Maina
Berger Realty Inc
3160 Asbury Avenue, Ocean City
Call: 609-703-7725
Email to: tam@bergerrealty.com

Scan to see Property page.

