

Berger Realty

Since 1926



Ocean 17
1670 Boardwalk
Ocean City, NJ 08226
609-391-0500

oc17@BergerRealty.com



408 Bethel, Somers Point, NJ, 08244

Price \$489,900.00

PROPERTY DETAILS

Total Rooms	
Bedrooms	0
Baths Full	0
Baths Half	0
Year Built	1986
Type	
Block Number	813
Listing #	548702
Taxes	17893.00



COMMENTS

Professional Office Condo building in a complex with 7 other units, mostly medical. Shell possibilities are endless! Outside has been totally redone. Brand new roof, siding, soffit, fascia and windows. Currently has 6 meters. Finish the interior to your business needs!!...

PROPERTY FEATURES

Exterior	ParkingGarage
See Remarks	11 or More Spaces

CONTACT



Ask for Dylan Perry
Berger Realty Inc
1670 Boardwalk, Ocean City
Call: 609-675-6737
Email to: dcp@bergerrealty.com

Scan to see Property page.



Berger Realty

Since 1926



Ocean 17
1670 Boardwalk
Ocean City, NJ 08226
609-391-0500

oc17@BergerRealty.com



408 Bethel, Somers Point, NJ, 08244

Price \$489,900.00

PROPERTY DETAILS

Total Rooms	
Bedrooms	0
Baths Full	0
Baths Half	0
Year Built	1986
Type	
Block Number	813
Listing #	548702
Taxes	17893.00



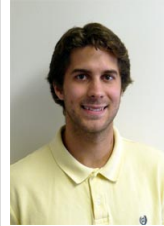
COMMENTS

Professional Office Condo building in a complex with 7 other units, mostly medical. Shell possibilities are endless! Outside has been totally redone. Brand new roof, siding, soffit, fascia and windows. Currently has 6 meters. Finish the interior to your business needs!!...

PROPERTY FEATURES

Exterior	ParkingGarage
See Remarks	11 or More Spaces

CONTACT



Ask for Dylan Perry
Berger Realty Inc
1670 Boardwalk, Ocean City
Call: 609-675-6737
Email to: dcp@bergerrealty.com

Scan to see Property page.

