

# Berger Realty

Since 1926



Berger Realty, Inc  
1330 Bay Avenue  
Ocean City, NJ 08226  
609-391-1330/609-391-1300  
info@bergerrealty.com



110 45 th, Sea Isle City, NJ, 08243

Price \$1,200,000.00

## PROPERTY DETAILS

Total Rooms	0
Bedrooms	0
Baths Full	0
Baths Half	0
Year Built	
Type	Residential Vacant Lot
Block Number	45
Listing #	251021
Taxes	3725.00

## COMMENTS

*Attention Investors. Build your single family home just a block off the beach in the heart of Sea Isle City. Lot is 26x110 so a variance would be need to build. Buyer is responsible for all permitting....*

## PROPERTY FEATURES

## CONTACT



Ask for Joanne Kelly  
Berger Realty Inc  
1330 Bay Avenue, Ocean City  
Call: 609-425-2106  
Email to: jmk@bergerrealty.com

Scan to see Property page.



# Berger Realty

Since 1926



Berger Realty, Inc  
1330 Bay Avenue  
Ocean City, NJ 08226  
609-391-1330/609-391-1300  
info@bergerrealty.com



110 45 th, Sea Isle City, NJ, 08243

Price \$1,200,000.00

## PROPERTY DETAILS

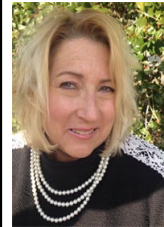
Total Rooms	0
Bedrooms	0
Baths Full	0
Baths Half	0
Year Built	
Type	Residential Vacant Lot
Block Number	45
Listing #	251021
Taxes	3725.00

## COMMENTS

*Attention Investors. Build your single family home just a block off the beach in the heart of Sea Isle City. Lot is 26x110 so a variance would be need to build. Buyer is responsible for all permitting....*

## PROPERTY FEATURES

## CONTACT



Ask for Joanne Kelly  
Berger Realty Inc  
1330 Bay Avenue, Ocean City  
Call: 609-425-2106  
Email to: jmk@bergerrealty.com

Scan to see Property page.

