

Berger Realty

Since 1926



Berger Realty, Inc.
3160 Asbury Avenue
Ocean City, NJ 08226
1-877-237-4371 / 609-399-0076
info@bergerrealty.com

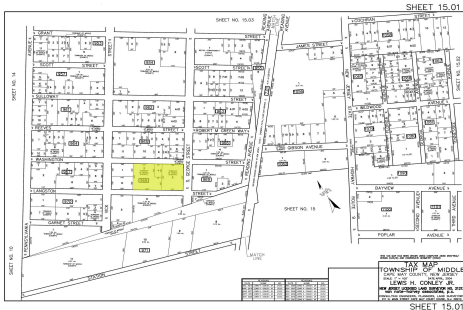


Langston, Whitesboro, NJ, 08252

Price \$150,000.00

PROPERTY DETAILS

Total Rooms	0
Bedrooms	0
Baths Full	0
Baths Half	0
Year Built	
Type	Residential Vacant Lot
Block Number	968
Listing #	250819
Taxes	384.00



COMMENTS

Prime opportunity to own 2 acres of wooded land in an up and coming residential area of Middle Township. The property consists of 3 separate lots, offering flexibility for development or a private retreat. Nestled in a peaceful, natural setting, yet conveniently located near local amenities, schools, and major routes. Ideal for builders, investors, or those seeking to buil...

PROPERTY FEATURES

CONTACT



Ask for Thomas Byrne
Berger Realty Inc
3160 Asbury Avenue, Ocean City
Call: 215-327-9152
Email to: tfb@bergerrealty.com

Scan to see Property page.



Berger Realty

Since 1926



Berger Realty, Inc.
3160 Asbury Avenue
Ocean City, NJ 08226
1-877-237-4371 / 609-399-0076
info@bergerrealty.com

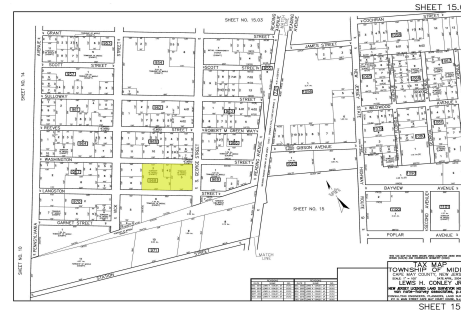


Langston, Whitesboro, NJ, 08252

Price \$150,000.00

PROPERTY DETAILS

Total Rooms	0
Bedrooms	0
Baths Full	0
Baths Half	0
Year Built	
Type	Residential Vacant Lot
Block Number	968
Listing #	250819
Taxes	384.00



COMMENTS

Prime opportunity to own 2 acres of wooded land in an up and coming residential area of Middle Township. The property consists of 3 separate lots, offering flexibility for development or a private retreat. Nestled in a peaceful, natural setting, yet conveniently located near local amenities, schools, and major routes. Ideal for builders, investors, or those seeking to buil...

PROPERTY FEATURES

CONTACT



Ask for Thomas Byrne
Berger Realty Inc
3160 Asbury Avenue, Ocean City
Call: 215-327-9152
Email to: tfb@bergerrealty.com

Scan to see Property page.

