

# Berger Realty

Since 1928



Berger Realty, Inc.  
3160 Asbury Avenue  
Ocean City, NJ 08226  
1-877-237-4371 / 609-399-0076  
info@bergerrealty.com



937 A Myrna, Erma, NJ, 08204

Price \$168,000.00

### PROPERTY DETAILS

Total Rooms	
Bedrooms	0
Baths Full	0
Baths Half	0
Year Built	
Type	Residential Vacant Lot
Block Number	487.03
Listing #	250817
Taxes	1.00

### COMMENTS

Approved buildable lot available in a great central location in Erma. The neighborhood is city sewer and well. Great opportunity to build your dream home or invest in Lower Township. Lot 84 directly next-door is also available. Address and taxes are to be determined....

### PROPERTY FEATURES

### CONTACT



Ask for Margarita Kobilianets  
Berger Realty Inc  
3160 Asbury Avenue, Ocean City  
Call: 609-674-3417  
Email to: mak@bergerrealty.com

Scan to see Property page.



# Berger Realty

Since 1928



Berger Realty, Inc.  
3160 Asbury Avenue  
Ocean City, NJ 08226  
1-877-237-4371 / 609-399-0076  
info@bergerrealty.com



937 A Myrna, Erma, NJ, 08204

Price \$168,000.00

### PROPERTY DETAILS

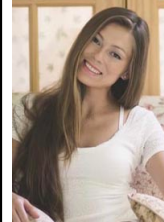
Total Rooms	
Bedrooms	0
Baths Full	0
Baths Half	0
Year Built	
Type	Residential Vacant Lot
Block Number	487.03
Listing #	250817
Taxes	1.00

### COMMENTS

Approved buildable lot available in a great central location in Erma. The neighborhood is city sewer and well. Great opportunity to build your dream home or invest in Lower Township. Lot 84 directly next-door is also available. Address and taxes are to be determined....

### PROPERTY FEATURES

### CONTACT



Ask for Margarita Kobilianets  
Berger Realty Inc  
3160 Asbury Avenue, Ocean City  
Call: 609-674-3417  
Email to: mak@bergerrealty.com

Scan to see Property page.

