



Berger Realty, Inc.  
3160 Asbury Avenue  
Ocean City, NJ 08226  
1-877-237-4371 / 609-399-0076  
info@bergerrealty.com



610 Beach, Cape May, NJ, 08204

Price \$1,000,000.00



#### PROPERTY DETAILS

Total Rooms	
Bedrooms	0
Baths Full	0
Baths Half	0
Year Built	
Type	Other
Block Number	1000
Listing #	250586
Taxes	8463.00

#### COMMENTS

*Rare opportunity to own 8.17 acres of prime beach property in Cape May! Nestled between city lots, this expansive parcel offers an unparalleled location along the iconic shoreline. A unique offering, this property is subject to provisions contained in an easement recorded with the deed. The seller makes no representations regarding permitted uses, and buyers are encourage...*

#### PROPERTY FEATURES

#### CONTACT



Ask for Thomas Byrne  
Berger Realty Inc  
3160 Asbury Avenue, Ocean City  
Call: 215-327-9152  
Email to: tfb@bergerrealty.com

Scan to see Property page.

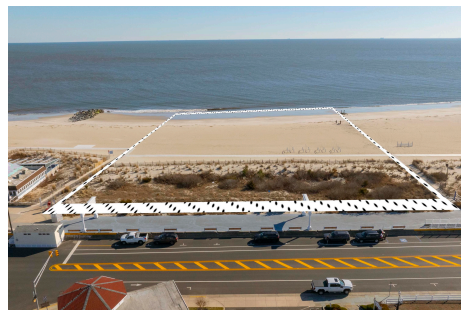


Berger Realty, Inc.  
3160 Asbury Avenue  
Ocean City, NJ 08226  
1-877-237-4371 / 609-399-0076  
info@bergerrealty.com



610 Beach, Cape May, NJ, 08204

Price \$1,000,000.00



#### PROPERTY DETAILS

Total Rooms	
Bedrooms	0
Baths Full	0
Baths Half	0
Year Built	
Type	Other
Block Number	1000
Listing #	250586
Taxes	8463.00

#### COMMENTS

*Rare opportunity to own 8.17 acres of prime beach property in Cape May! Nestled between city lots, this expansive parcel offers an unparalleled location along the iconic shoreline. A unique offering, this property is subject to provisions contained in an easement recorded with the deed. The seller makes no representations regarding permitted uses, and buyers are encourage...*

#### PROPERTY FEATURES

#### CONTACT



Ask for Thomas Byrne  
Berger Realty Inc  
3160 Asbury Avenue, Ocean City  
Call: 215-327-9152  
Email to: tfb@bergerrealty.com

Scan to see Property page.

