

Berger Realty

Since 1928



Berger Realty, Inc.
3160 Asbury Avenue
Ocean City, NJ 08226
1-877-237-4371 / 609-399-0076
info@bergerrealty.com



610 Beach, Cape May, NJ, 08204

Price \$1,000,000.00

PROPERTY DETAILS

Total Rooms	
Bedrooms	0
Baths Full	0
Baths Half	0
Year Built	
Type	Other
Block Number	1000
Listing #	250586
Taxes	8463.00

COMMENTS

Rare opportunity to own 8.17 acres of prime beach property in Cape May! Nestled between city lots, this expansive parcel offers an unparalleled location along the iconic shoreline. A unique offering, this property is subject to provisions contained in an easement recorded with the deed. The seller makes no representations regarding permitted uses, and buyers are encourage...

PROPERTY FEATURES

CONTACT



Ask for Margarita Kobilianets
Berger Realty Inc
3160 Asbury Avenue, Ocean City
Call: 609-674-3417
Email to: mak@bergerrealty.com

Scan to see Property page.



Berger Realty

Since 1928



Berger Realty, Inc.
3160 Asbury Avenue
Ocean City, NJ 08226
1-877-237-4371 / 609-399-0076
info@bergerrealty.com



610 Beach, Cape May, NJ, 08204

Price \$1,000,000.00

PROPERTY DETAILS

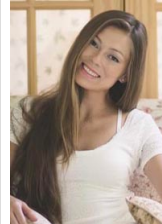
Total Rooms	
Bedrooms	0
Baths Full	0
Baths Half	0
Year Built	
Type	Other
Block Number	1000
Listing #	250586
Taxes	8463.00

COMMENTS

Rare opportunity to own 8.17 acres of prime beach property in Cape May! Nestled between city lots, this expansive parcel offers an unparalleled location along the iconic shoreline. A unique offering, this property is subject to provisions contained in an easement recorded with the deed. The seller makes no representations regarding permitted uses, and buyers are encourage...

PROPERTY FEATURES

CONTACT



Ask for Margarita Kobilianets
Berger Realty Inc
3160 Asbury Avenue, Ocean City
Call: 609-674-3417
Email to: mak@bergerrealty.com

Scan to see Property page.

