

# Berger Realty

Since 1926



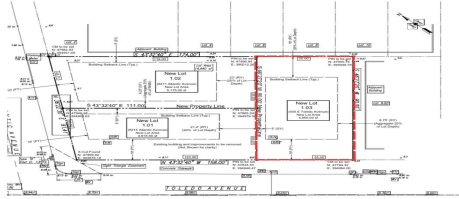
Berger Realty, Inc.  
3160 Asbury Avenue  
Ocean City, NJ 08226  
1-877-237-4371 / 609-399-0076  
info@bergerrealty.com



405 Toledo, 1.03, Wildwood Crest, NJ, 08260

Price \$1,690,000.00

### PROPERTY DETAILS



Total Rooms	
Bedrooms	0
Baths Full	0
Baths Half	0
Year Built	
Type	Residential Vacant Lot
Block Number	126
Listing #	250474
Taxes	9999999.00

### COMMENTS

*Premier Beach Block opportunity in the desirable "South End" of Wildwood Crest! Currently the Ala Kai II Motel, this property can accommodate 3 single family homes each sitting on larger sized lots, pending a subdivision approval. Proposed lot size of this lot will be (lot 1.03) 55x90. This beach block property will have tremendous water views, be a short stroll to the b...*

### PROPERTY FEATURES

### CONTACT

Berger Realty Inc  
3160 Asbury Ave.  
Ocean City, NJ 08226  
Call: (609) 399-0076  
Email to: info@bergerrealty.com  
Web: www.bergerrealty.com

Scan to see Property page.



# Berger Realty

Since 1926



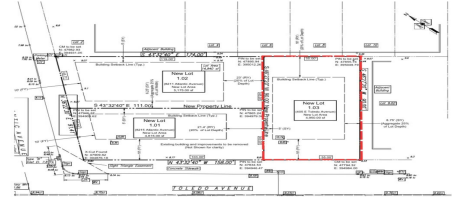
Berger Realty, Inc.  
3160 Asbury Avenue  
Ocean City, NJ 08226  
1-877-237-4371 / 609-399-0076  
info@bergerrealty.com



405 Toledo, 1.03, Wildwood Crest, NJ, 08260

Price \$1,690,000.00

### PROPERTY DETAILS



Total Rooms	
Bedrooms	0
Baths Full	0
Baths Half	0
Year Built	
Type	Residential Vacant Lot
Block Number	126
Listing #	250474
Taxes	9999999.00

### COMMENTS

*Premier Beach Block opportunity in the desirable "South End" of Wildwood Crest! Currently the Ala Kai II Motel, this property can accommodate 3 single family homes each sitting on larger sized lots, pending a subdivision approval. Proposed lot size of this lot will be (lot 1.03) 55x90. This beach block property will have tremendous water views, be a short stroll to the b...*

### PROPERTY FEATURES

### CONTACT

Berger Realty Inc  
3160 Asbury Ave.  
Ocean City, NJ 08226  
Call: (609) 399-0076  
Email to: info@bergerrealty.com  
Web: www.bergerrealty.com

Scan to see Property page.

